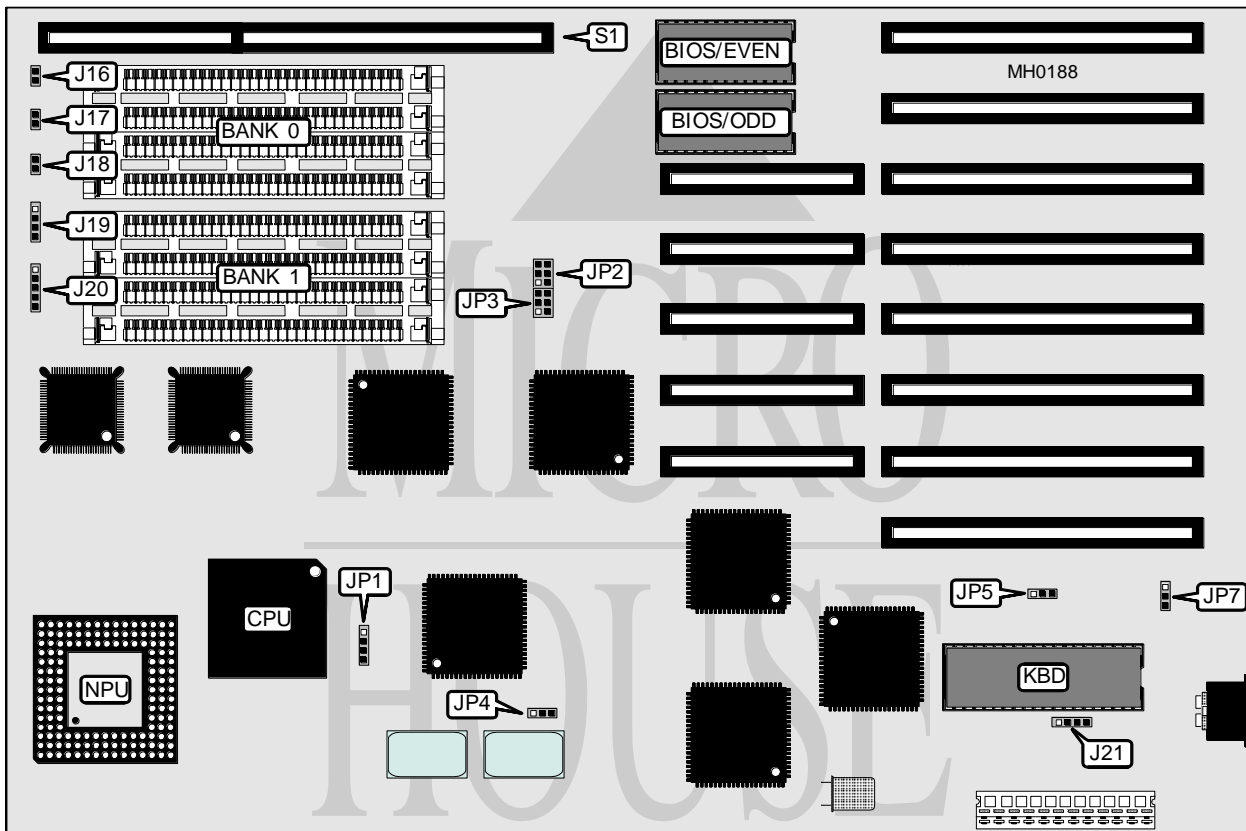


# JAMECO ELECTRONIC COMPONENTS

## JE3525DN

<b>Processor</b>	80386DX
<b>Processor Speed</b>	25MHz
<b>Chip Set</b>	C & T
<b>Max. Onboard DRAM</b>	8MB
<b>Cache</b>	None
<b>BIOS</b>	AMI
<b>Dimensions</b>	330mm x 218mm
<b>I/O Options</b>	32-bit external memory card slot
<b>NPU Options</b>	80387/3167



CONNECTIONS			
Purpose	Location	Purpose	Location
Turbo LED	J16	Power LED & keylock	J20
Turbo switch	J17	External battery	J21
Reset switch	J18	32-bit external memory card	S1
Speaker	J19		

Continued on next page . . .

## JAMECO ELECTRONIC COMPONENTS

## JE3525DN

... continued from previous page

USER CONFIGURABLE SETTINGS		
Function	Jumper	Position
í NPU select 3167 or none	JP1	pins 1 & 2 closed
NPU select 80387	JP1	pins 3 & 4 closed
í CPU speed select 25MHz	JP4	pins 1 & 2 closed
CPU speed select 16MHz	JP4	pins 2 & 3 closed
í Monitor type select color	JP5	pins 2 & 3 closed
Monitor type select monochrome	JP5	pins 1 & 2 closed
í Power supply select internal (200 watts)	JP7	pins 1 & 2 closed
Power supply select external (150 watts)	JP7	pins 2 & 3 closed

DRAM CONFIGURATION		
Size	Bank 0	Bank 1
1MB	(4) 256K x 9	NONE
2MB	(4) 256K x 9	(4) 256K x 9
4MB	(4) 1M x 9	NONE
8MB	(4) 1M x 9	(4) 1M x 9

EXTERNAL MEMORY CARD CONFIGURATION		
Size	JP2	JP3
Disabled	pins 2 & 3 closed	pins 4 & 5 closed
Enabled	pins 1 & 2 closed	pins 5 & 6 closed