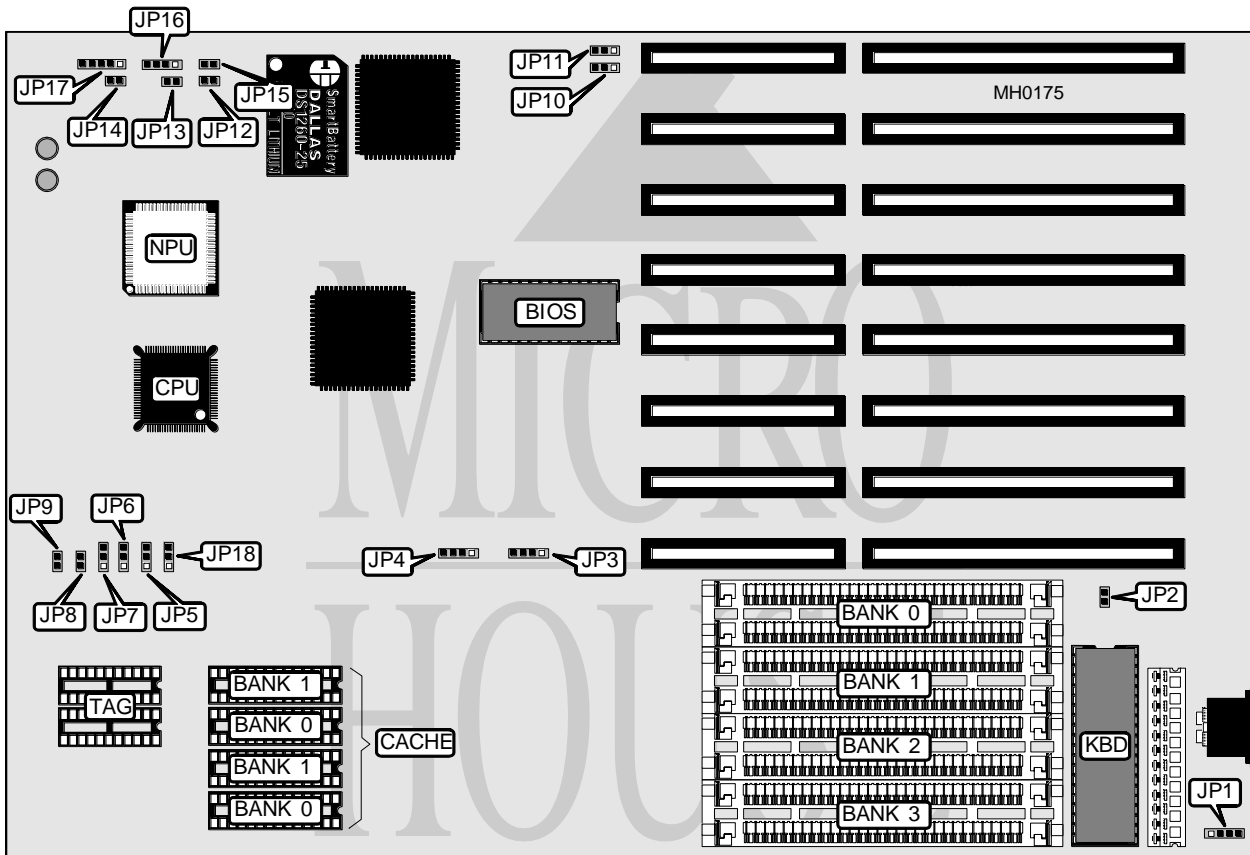


OMNITEL, INC.

386SX REV. B

Processor	80386SX
Processor Speed	20/25MHz
Chip Set	OPTI
Max. Onboard DRAM	16MB
Cache	16/32/64KB
BIOS	MR
Dimensions	330.2mm x 218.4mm
I/O Options	None
NPU Options	80387SX



CONNECTIONS			
Purpose	Location	Purpose	Location
External battery	JP1	Turbo switch	JP15
Turbo LED	JP13	Speaker	JP16
Reset switch	JP14	Power LED & keylock	JP17

Continued on next page . . .

OMNITEL, INC.
386SX REV. B

... continued from previous page

USER CONFIGURABLE SETTINGS		
Function	Jumper	Position
í Battery select internal	JP10	pins 2 & 3 closed
Battery select external	JP10	pins 1 & 2 closed
í Diagnostics disabled	JP12	Open
Diagnostics enabled	JP12	Closed

DRAM CONFIGURATION				
Size	Bank 0	Bank 1	Bank 2	Bank 3
1MB	(2) 256K x 9	(2) 256K x 9	NONE	NONE
2MB	(2) 256K x 9	(2) 256K x 9	(2) 256K x 9	(2) 256K x 9
3MB	(2) 256K x 9	(2) 256K x 9	(2) 1M x 9	NONE
4MB	(2) 1M x 9	(2) 1M x 9	NONE	NONE
5MB	(2) 256K x 9	(2) 256K x 9	(2) 1M x 9	(2) 1M x 9
6MB	(2) 1M x 9	(2) 1M x 9	(2) 1M x 9	NONE
8MB	(2) 1M x 9	(2) 1M x 9	(2) 1M x 9	(2) 1M x 9
9MB	(2) 256K x 9	(2) 256K x 9	(2) 4M x 9	NONE
10MB	(2) 1M x 9	(2) 4M x 9	NONE	NONE
12MB	(2) 1M x 9	(2) 1M x 9	(2) 4M x 9	NONE
16MB	(2) 4M x 9	(2) 4M x 9	NONE	NONE

CACHE JUMPER CONFIGURATION						
16KB	1 & 2	1 & 2	1 & 2	Open	Open	1 & 2
32KB	1 & 2	2 & 3	1 & 2	Closed	Open	2 & 3
64KB	2 & 3	2 & 3	2 & 3	Open	Closed	2 & 3

Note: Pins designated should be in the closed position.

CACHE CONFIGURATION		
Size	Bank 0	Bank 1
16KB	(2) 8K x 8	NONE
32KB	(2) 8K x 8	(2) 8K x 8
64KB	(2) 32K x 8	NONE

Note: TAG is factory installed and cannot be altered.