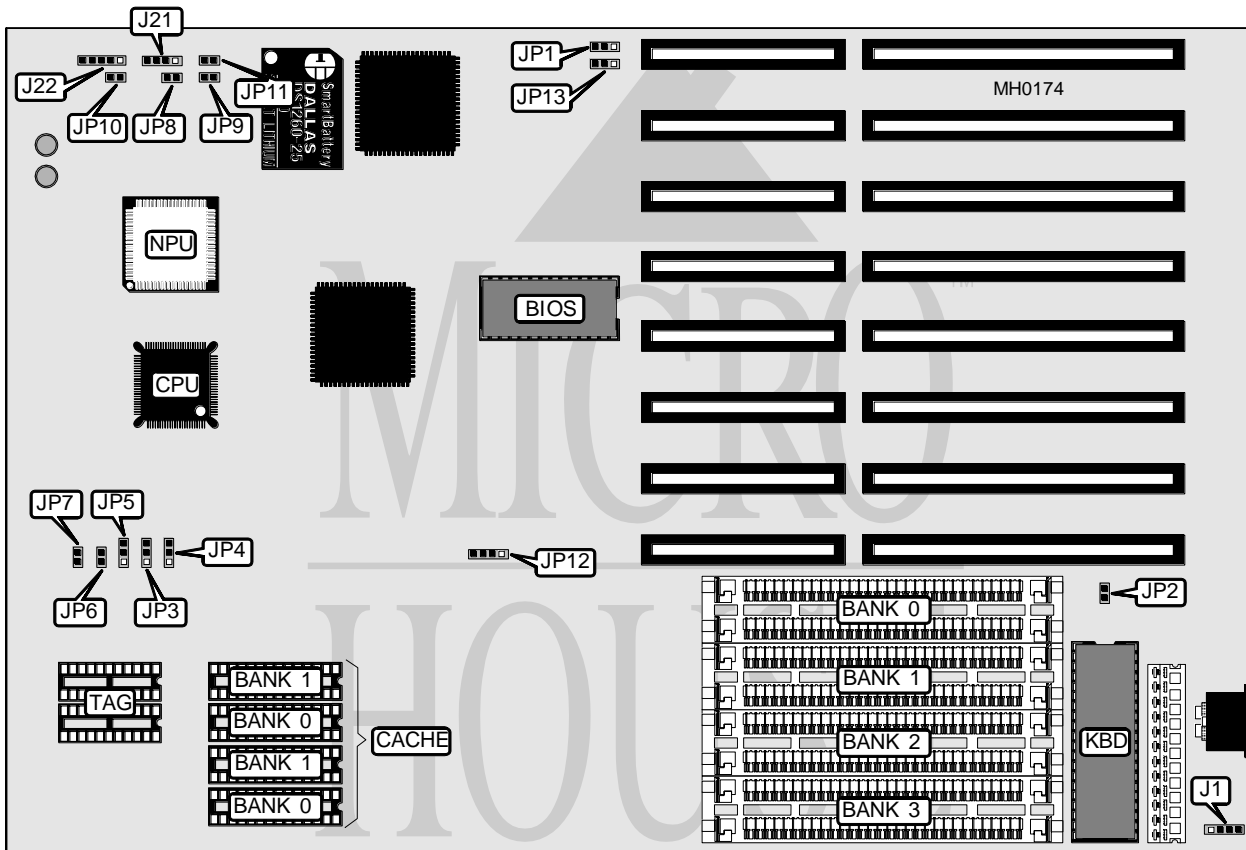


# OMNITEL, INC.

## 386SX REV. 1

<b>Processor</b>	80386SX
<b>Processor Speed</b>	20/25MHz
<b>Chip Set</b>	OPTI
<b>Max. Onboard DRAM</b>	16MB
<b>Cache</b>	16/32/64KB
<b>BIOS</b>	MR
<b>Dimensions</b>	330mm x 218mm
<b>I/O Options</b>	None
<b>NPU Options</b>	80387SX



CONNECTIONS			
Purpose	Location	Purpose	Location
External battery	J1	Reset switch	JP10
Power LED & keylock	J22	Turbo switch	JP11
Turbo LED	JP8	Speaker	JP21

Continued on next page . . .

# OMNITEL, INC.

## 386SX REV. 1

... continued from previous page

USER CONFIGURABLE SETTINGS		
Function	Jumper	Position
í Diagnostics enabled	JP9	Closed
Diagnostics disabled	JP9	Open
í Battery select external	JP13	pins 1 & 2 closed
Battery select internal	JP13	pins 2 & 3 closed

DRAM CONFIGURATION				
Size	Bank 0	Bank 1	Bank 2	Bank 3
1MB	(2) 256K x 9	(2) 256K x 9	NONE	NONE
2MB	(2) 256K x 9	(2) 256K x 9	(2) 256K x 9	(2) 256K x 9
2MB	(2) 1M x 9	NONE	NONE	NONE
3MB	(2) 256K x 9	(2) 256K x 9	(2) 1M x 9	NONE
4MB	(2) 1M x 9	(2) 1M x 9	NONE	NONE
5MB	(2) 256K x 9	(2) 256K x 9	(2) 1M x 9	(2) 1M x 9
6MB	(2) 1M x 9	(2) 1M x 9	(2) 1M x 9	NONE
8MB	(2) 1M x 9	(2) 1M x 9	(2) 1M x 9	(2) 1M x 9
9MB	(2) 256K x 9	(2) 256K x 9	(2) 4M x 9	NONE
10MB	(2) 1M x 9	(2) 4M x 9	NONE	NONE
12MB	(2) 1M x 9	(2) 1M x 9	(2) 4M x 9	NONE
16MB	(2) 4M x 9	(2) 4M x 9	NONE	NONE

CACHE CONFIGURATION		
Size	Bank 0	Bank 1
16KB	(2) 8K x 8	NONE
32KB	(2) 8K x 8	(2) 8K x 8
64KB	(2) 32K x 8	NONE

Note: TAG is factory installed and is not configurable.

CACHE JUMPER CONFIGURATION					
Size	JP3	JP4	JP5	JP6	JP7
16KB	1 & 2	1 & 2	1 & 2	Open	Open
32KB	2 & 3	1 & 2	1 & 2	Closed	Open
64KB	2 & 3	2 & 3	2 & 3	Open	Closed

Note: Pins designated should be in the closed position.