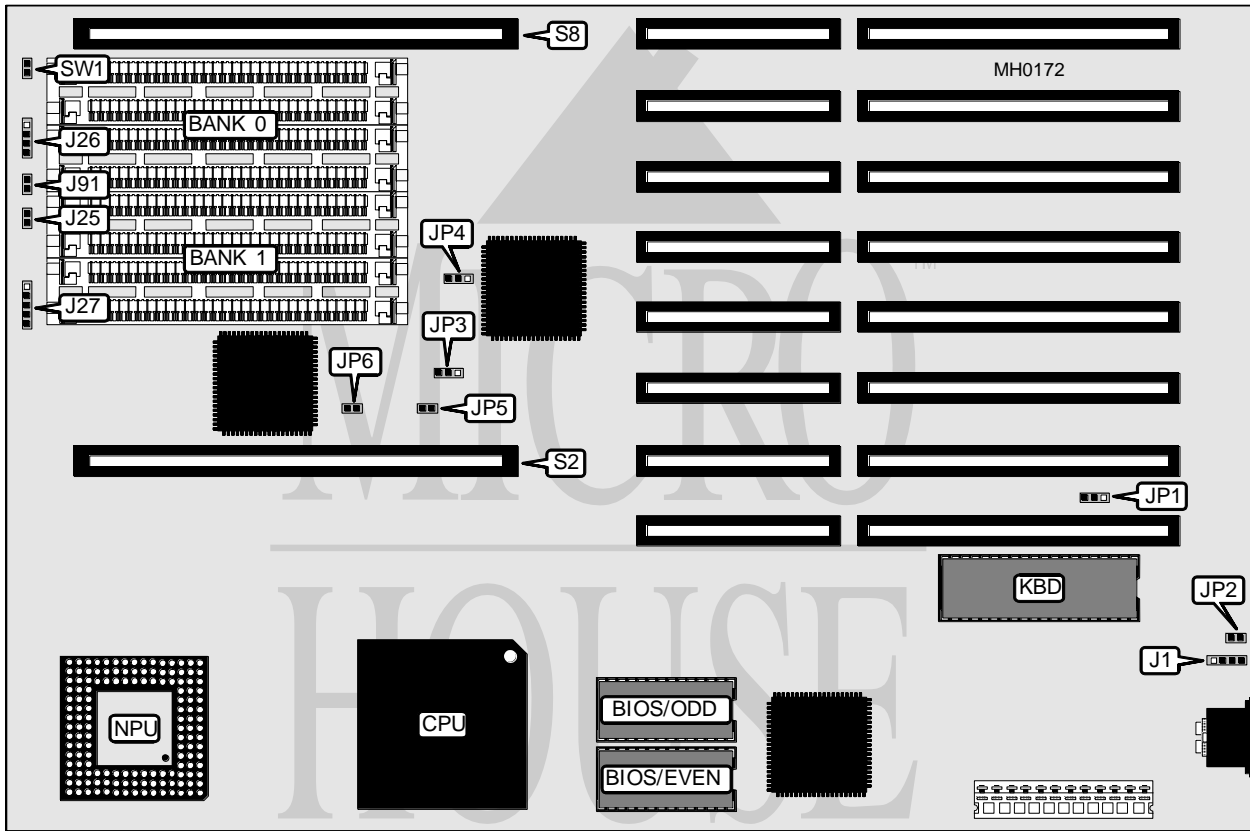


HAWK COMPUTERS

486 CACHE VER. 1

Processor 80486DX
Processor Speed 25/33MHz
Chip Set Hawk
Max. Onboard DRAM 8MB
Cache 64/128/256/512KB (on external cache card)
BIOS AMI
Dimensions 330mm x 218mm
I/O Options 32-bit external memory card slot, 32-bit external cache card slot
NPU Options 4167



CONNECTIONS			
Purpose	Location	Purpose	Location
External battery	J1	Turbo LED	J91
Turbo switch	J25	External cache card	S2
Speaker	J26	External memory card	S8
Power LED & keylock	J27	Reset switch	SW1

Continued on next page . . .

HAWK COMPUTERS

486 CACHE VER. 1

... continued from previous page

USER CONFIGURABLE SETTINGS		
Function	Jumper	Position
í Factory configured - do not alter	JP1	pins 2 & 3 closed
í Monitor type select color	JP2	Closed
Monitor type select monochrome	JP2	Open

DRAM CONFIGURATION				
Size	Bank 0	Bank 1	Bank 2	Bank 3
1MB	(4) 256K x 9	NONE	NONE	NONE
2MB	(4) 256K x 9	(4) 256K x 9	NONE	NONE
4MB	(4) 1M x 9	NONE	NONE	NONE
8MB	(4) 1M x 9	(4) 1M x 9	NONE	NONE
9MB	(4) 1M x 9	(4) 1M x 9	(4) 256K x 9	NONE
10MB	(4) 1M x 9	(4) 1M x 9	(4) 256K x 9	(4) 256K x 9
12MB	(4) 1M x 9	(4) 1M x 9	(4) 1M x 9	NONE
16MB	(4) 1M x 9	(4) 1M x 9	(4) 1M x 9	(4) 1M x 9

Note: Banks 2 & 3 are used when an external memory card is installed.
Jumpers 1 - 8 on card should each have pins 2 & 3 closed at all times.

CACHE JUMPER CONFIGURATION		
Setting	JP5	JP6
Enabled	Open	Open
Disabled	Closed	Closed

EXTERNAL CACHE CARD JUMPER CONFIGURATION						
Size	J1	J2	J3	J4	J5	J6
64KB	Open	1 & 2	Closed	Closed	1 & 2	Closed
128KB	Open	2 & 3	Closed	Open	1 & 2	Closed
256KB	Closed	2 & 3	Open	Closed	2 & 3	Closed
512KB	Closed	2 & 3	Open	Open	2 & 3	Open

Note: Proprietary external cache card fits in expansion slot S2 only. Pins designated should be in the closed position.

CPU SPEED CONFIGURATION		
Size	JP3	JP4
25MHz	pins 1 & 2 closed	pins 1 & 2 closed
33MHz	pins 2 & 3 closed	pins 2 & 3 closed