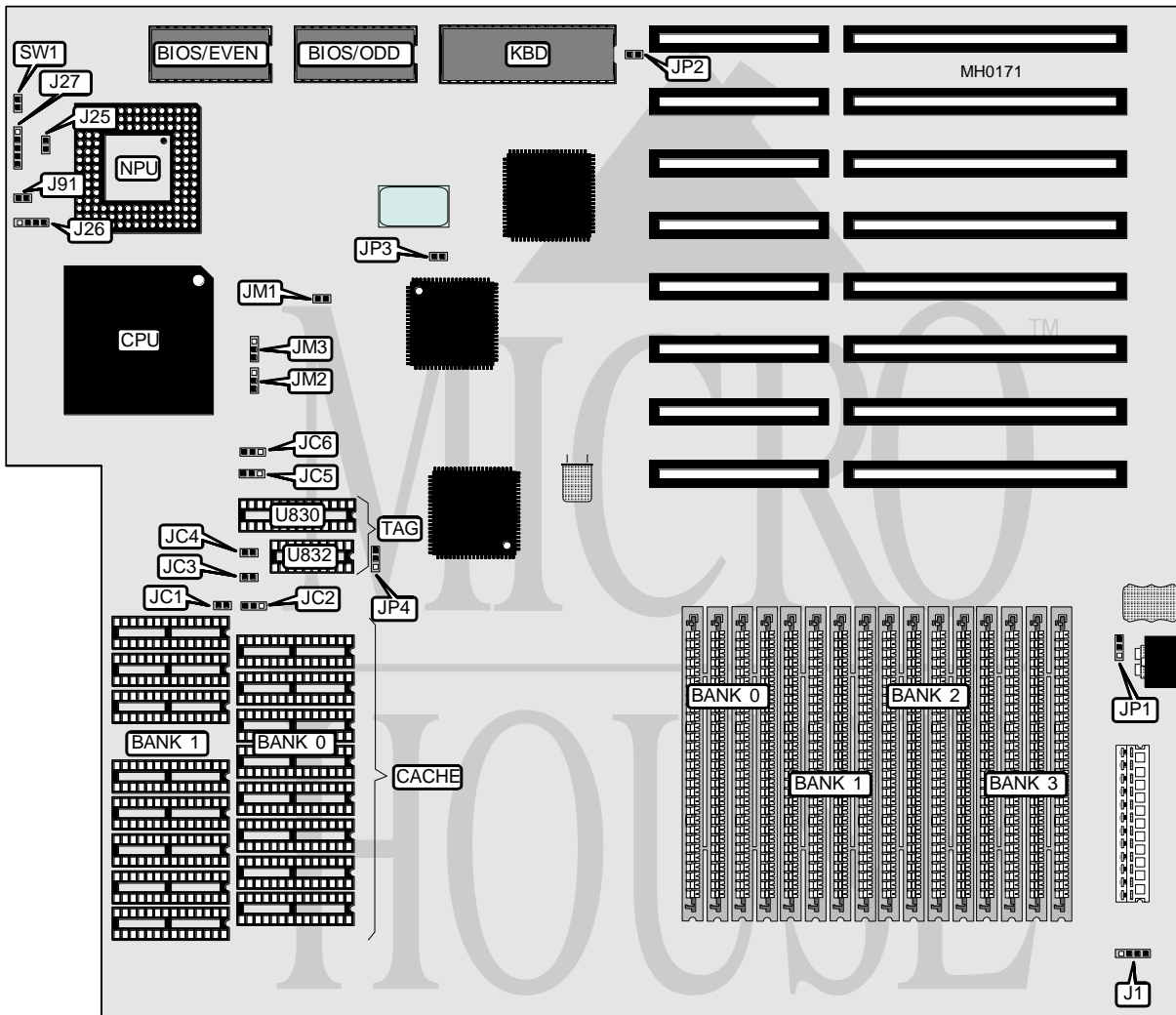


HAWK COMPUTERS 486 CACHE VER. 3

Processor	80486SX/80487SX/80486DX
Processor Speed	25/33MHz
Chip Set	OPTI
Max. Onboard DRAM	32MB
Cache	64/128/256/512KB
BIOS	AMI
Dimensions	355mm x 304mm
I/O Options	None
NPU Options	4167



CONNECTIONS			
Purpose	Location	Purpose	Location
External battery	J1	Power LED & keylock	J27
Turbo switch	J25	Turbo LED	J91
Speaker	J26	Reset switch	SW1

Continued on next page . . .

HAWK COMPUTERS

486 CACHE VER. 3

... continued from previous page

USER CONFIGURABLE SETTINGS		
Function	Jumper	Position
í Factory configured - do not alter	JP1	pins 1 & 2 closed
í Monitor type select color	JP2	Closed
Monitor type select monochrome	JP2	Open
í Factory configured - do not alter	JP3	pins 2 & 3 closed
í Factory configured - do not alter	JP4	pins 1 & 2 closed

DRAM CONFIGURATION				
Size	Bank 0	Bank 1	Bank 2	Bank 3
1MB	(4) 256K x 9	NONE	NONE	NONE
2MB	(4) 256K x 9	(4) 256K x 9	NONE	NONE
4MB	(4) 1M x 9	NONE	NONE	NONE
8MB	(4) 1M x 9	(4) 1M x 9	NONE	NONE
12MB	(4) 1M x 9	(4) 1M x 9	(4) 1M x 9	NONE
16MB	(4) 1M x 9	(4) 1M x 9	(4) 1M x 9	(4) 1M x 9
16MB	(4) 4M x 9	NONE	NONE	NONE
32MB	(4) 4M x 9	(4) 4M x 9	NONE	NONE

CACHE CONFIGURATION				
Size	Bank 0	Bank 1	TAG (U830)	TAG (U832)
64KB	(8) 8K x 8	NONE	(1) 8K x 8	(1) 16K x 1
128KB	(8) 8K x 8	(8) 8K x 8	(1) 8K x 8	NONE
256KB	(8) 32K x 8	NONE	(1) 32K x 8	NONE
512KB	(8) 32K x 8	(8) 32K x 8	(1) 32K x 8	NONE

CACHE JUMPER CONFIGURATION						
Size	JC1	JC2	JC3	JC4	JC5	JC6
64KB	Open	1 & 2	Closed	Closed	1 & 2	1 & 2
128KB	Open	2 & 3	Closed	Open	1 & 2	1 & 2
256KB	Closed	2 & 3	Open	Closed	2 & 3	1 & 2
512KB	Closed	2 & 3	Open	Open	2 & 3	2 & 3

Note: Pins designated should be in the closed position.

CPU TYPE CONFIGURATION			
Type	JM1	JM2	JM3
80486SX	Open	pins 2 & 3 closed	pins 2 & 3 closed
80487SX	Closed	pins 1 & 2 closed	pins 2 & 3 closed
80486DX	Closed	pins 1 & 2 closed	pins 1 & 2 closed