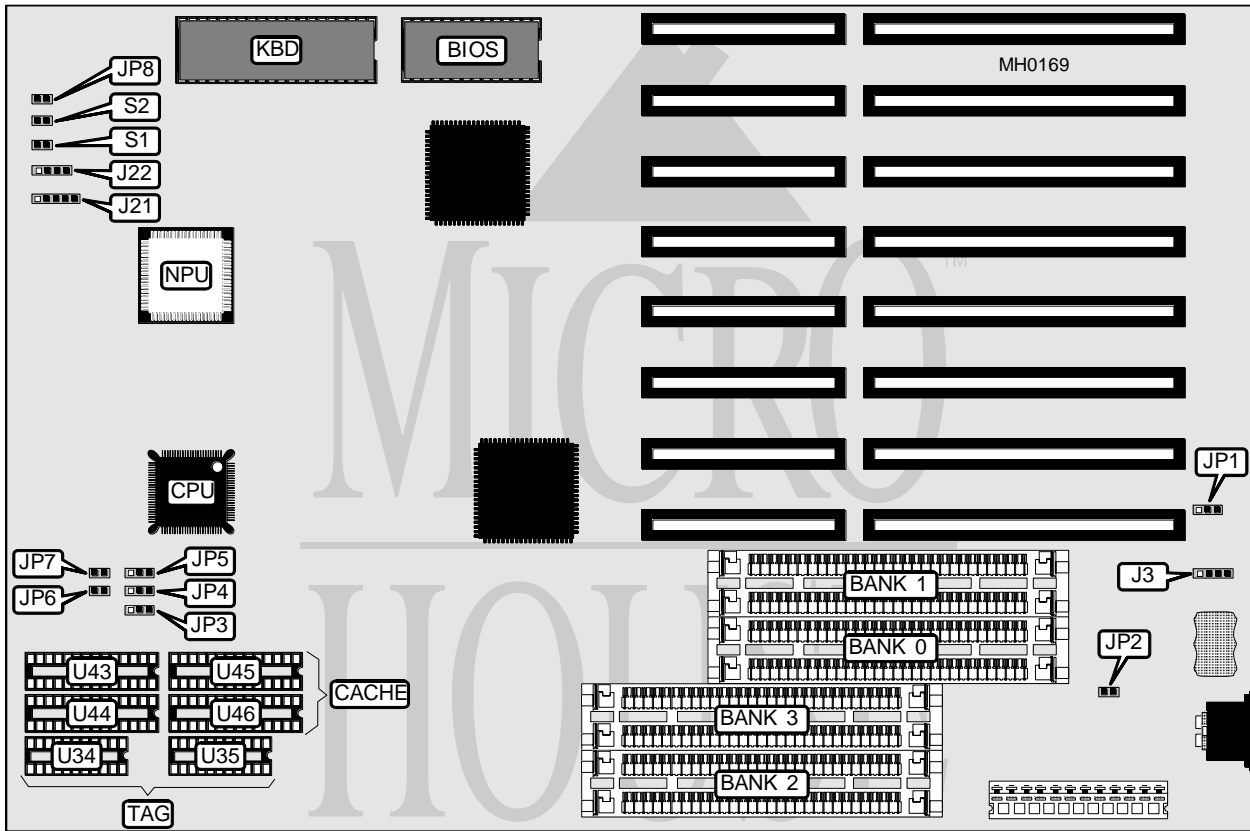


HAWK COMPUTERS

386SX CACHE SERIES

Processor	80386SX
Processor Speed	25MHz
Chip Set	C & T
Max. Onboard DRAM	32MB
Cache	16/32/64KB
BIOS	AMI
Dimensions	330mm x 218mm
I/O Options	None
NPU Options	80387SX



CONNECTIONS			
Purpose	Location	Purpose	Location
Reset switch	S1	Power LED & keylock	J21
Turbo switch	S2	Speaker	J22
External battery	J3	Turbo LED	JP8

Continued on next page . . .

HAWK COMPUTERS

386SX CACHE SERIES

... continued from previous page

USER CONFIGURABLE SETTINGS		
Function	Jumper	Position
í Factory configured - do not alter	JP1	pins 2 & 3 closed
í Monitor type select color	JP2	Closed
Monitor type select monochrome	JP2	Open

DRAM CONFIGURATION				
Size	Bank 0	Bank 1	Bank 2	Bank 3
1MB	(2) 256K x 9	(2) 256K x 9	NONE	NONE
2MB	(2) 256K x 9	(2) 256K x 9	(2) 256K x 9	(2) 256K x 9
2MB	(2) 1M x 9	(2) 1M x 9	NONE	NONE
4MB	(2) 1M x 9	(2) 1M x 9	NONE	NONE
6MB	(2) 1M x 9	(2) 1M x 9	(2) 1M x 9	NONE
8MB	(2) 1M x 9	(2) 1M x 9	(2) 1M x 9	(2) 1M x 9
16MB	(2) 4M x 9	(2) 4M x 9	NONE	NONE
32MB	(2) 4M x 9	(2) 4M x 9	(2) 4M x 9	(2) 4M x 9

CACHE CONFIGURATION			
Size	Bank 0	Bank 1	TAG
16KB	(2) 8K x 8	NONE	(2) 4K x 4
32KB	(2) 8K x 8	(2) 8K x 8	(2) 16K x 4
64KB	(2) 32K x 8	NONE	(2) 16K x 4

CACHE JUMPER CONFIGURATION					
Size	JP3	JP4	JP5	JP6	JP7
16KB	1 & 2	1 & 2	1 & 2	Open	Open
32KB	1 & 2	1 & 2	2 & 3	Open	Closed
64KB	2 & 3	2 & 3	2 & 3	Closed	Open

Note: Pins designated should be in the closed position.