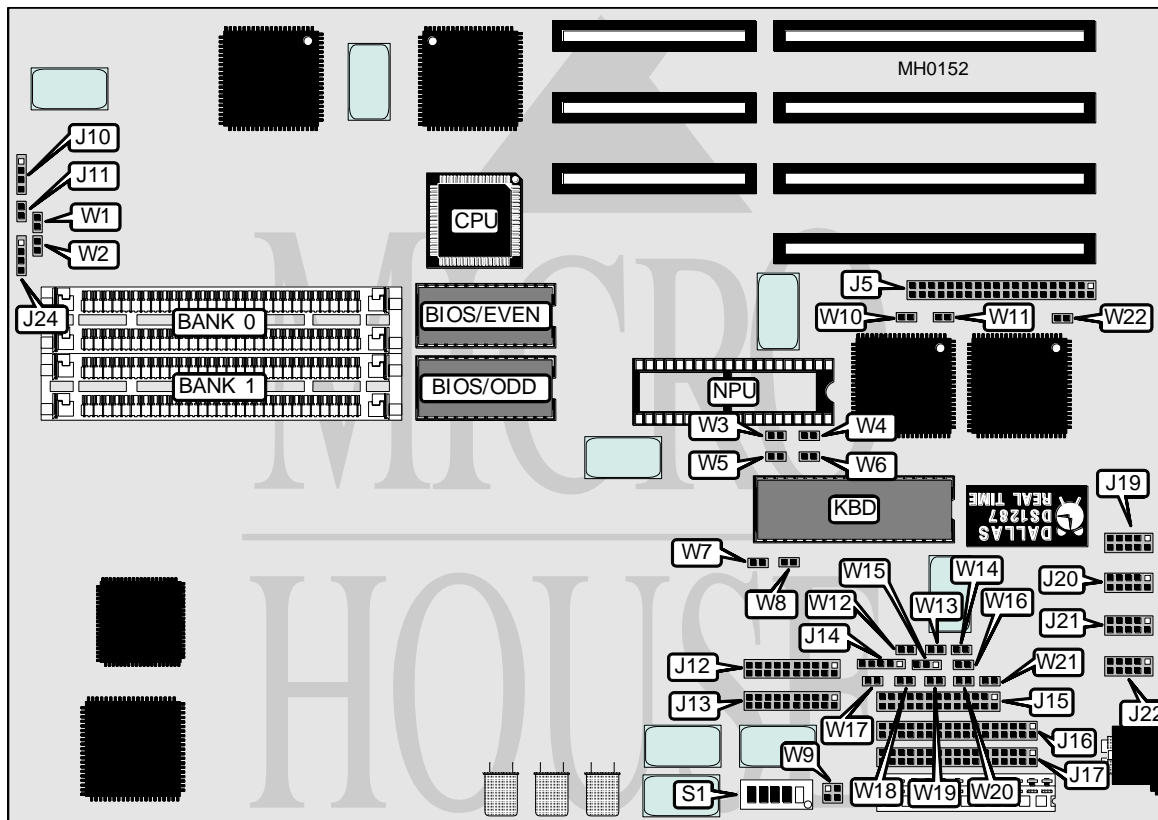


WESTERN DIGITAL CORPORATION

W D 2 8 6 - W D M 2

Processor	80286
Processor Speed	12.5MHz
Chip Set	Faraday
Max. Onboard DRAM	16MB
Cache	None
BIOS	AMI
Dimensions	330mm x 218mm
I/O Options	Parallel port, serial port (2), PS/2 mouse port, floppy drive interface, ST506/412 interface, video interface, IDE interface
NPU Options	80287



CONNECTIONS			
Purpose	Location	Purpose	Location
IDE interface (optional)	J5	Floppy drive interface	J16
Hard drive access LED	J10	ST506/412 drive control	J17
Reset switch	J11	Serial port 1	J19
ST506/412 data (Drive 0)	J12	Serial port 2	J20
ST506/412 data (Drive 1)	J13	Video interface	J21
Power LED & keylock	J14	PS/2 mouse port	J22
Parallel port (LPT1)	J15	Speaker	J24

Continued on next page . . .

WESTERN DIGITAL CORPORATION

W D 2 8 6 - W D M 2

... continued from previous page

USER CONFIGURABLE SETTINGS		
Function	Jumper	Position
í Factory configured - do not alter	W2	N/A
í Factory configured - do not alter	W4	Open
í Factory configured - do not alter	W6	Open
í Factory configured - do not alter	W7	pins 1 & 2 closed
í Floppy drive IRQ6 enabled	W8	Closed
Floppy drive IRQ6 disabled	W8	Open
í Factory configured - do not alter	W9	N/A
í Keyboard configuration XT compatible	W12	Closed
Keyboard configuration AT compatible	W12	Open
í Video IRQ9 enabled	W13	Closed
Video IRQ9 disabled	W13	Open
í Factory configured - do not alter	W14	N/A
í Factory configured - do not alter	W15	N/A
í Factory configured - do not alter	W16	N/A
í Mouse IRQ12 enabled	W17	Closed
Mouse IRQ12 disabled	W17	Open
í LPT1 (J15) IRQ7 enabled	W19	Closed
LPT1 (J15) IRQ7 disabled	W19	Open
í COM2 (J20) IRQ3 enabled	W20	Closed
COM2 (J20) IRQ3 disabled	W20	Open
í COM1 (J19) IRQ4 enabled	W21	Closed
COM1 (J19) IRQ4 disabled	W21	Open

DRAM CONFIGURATION		
Size	Bank 0	Bank 1
1MB	(2) 256K x 9	(2) 256K x 9
2MB	(2) 1M x 9	NONE
4MB	(2) 1M x 9	(2) 1M x 9
8MB	(2) 4M x 9	NONE
10MB	(2) 1M x 9	(2) 4M x 9
16MB	(2) 4M x 9	(2) 4M x 9

Continued on next page ...

WESTERN DIGITAL CORPORATION

W D 2 8 6 - W D M 2

... continued from previous page

VIDEO JUMPER CONFIGURATION						
Internal video only						
Monitor type	SW1/1	SW1/2	SW1/3	SW1/4	SW1/5	W18
Monochrome	Off	Off	On	Off	Off	Closed
CGA-40 columns	On	Off	Off	On	Off	Open
CGA-80 columns	Off	Off	Off	On	Off	Open
EGA-200 lines	On	On	On	Off	Off	Open
EGA-350/480 lines	Off	On	On	Off	Off	Open
Internal video as primary-color/External video as secondary-monochrome						
Color monitor type	SW1/1	SW1/2	SW1/3	SW1/4	SW1/5	W18
CGA-40 columns	On	Off	Off	On	Off	Open
CGA-80 columns	Off	Off	Off	On	Off	Open
EGA-200 lines	On	On	On	Off	Off	Open
EGA-350/480 lines	Off	On	On	Off	Off	Open
Internal video as secondary-color/External video as primary-monochrome						
Color monitor type	SW1/1	SW1/2	SW1/3	SW1/4	SW1/5	W18
CGA-40 columns	On	On	On	On	Off	Open
CGA-80 columns	Off	On	On	On	Off	Open
EGA-200 lines	On	Off	On	On	Off	Open
EGA-350/480 lines	Off	Off	On	On	Off	Open
Internal video as primary-monochrome/External video as secondary-color						
Color monitor type	SW1/1	SW1/2	SW1/3	SW1/4	SW1/5	W18
CGA-40 columns	On	Off	On	Off	Off	Open
CGA-80 columns	Off	Off	On	Off	Off	Open
Internal video as secondary-monochrome/External video as primary-color						
Color monitor type	SW1/1	SW1/2	SW1/3	SW1/4	SW1/5	W18
CGA-40 columns	On	On	Off	On	Off	open
CGA-80 columns	Off	On	Off	On	Off	open

HARD DRIVE CONFIGURATION						
Drive type	W1	W3	W5	W10	W11	W22
ST506/412	Closed	Closed	Closed	Open	Open	Open
IDE	Open	Open	Open	Closed	Closed	Closed
External	Open	Open	Open	Open	Open	Open
Note: An external hard drive may be used secondary to the ST506/412 with the ST506/412 jumper settings.						