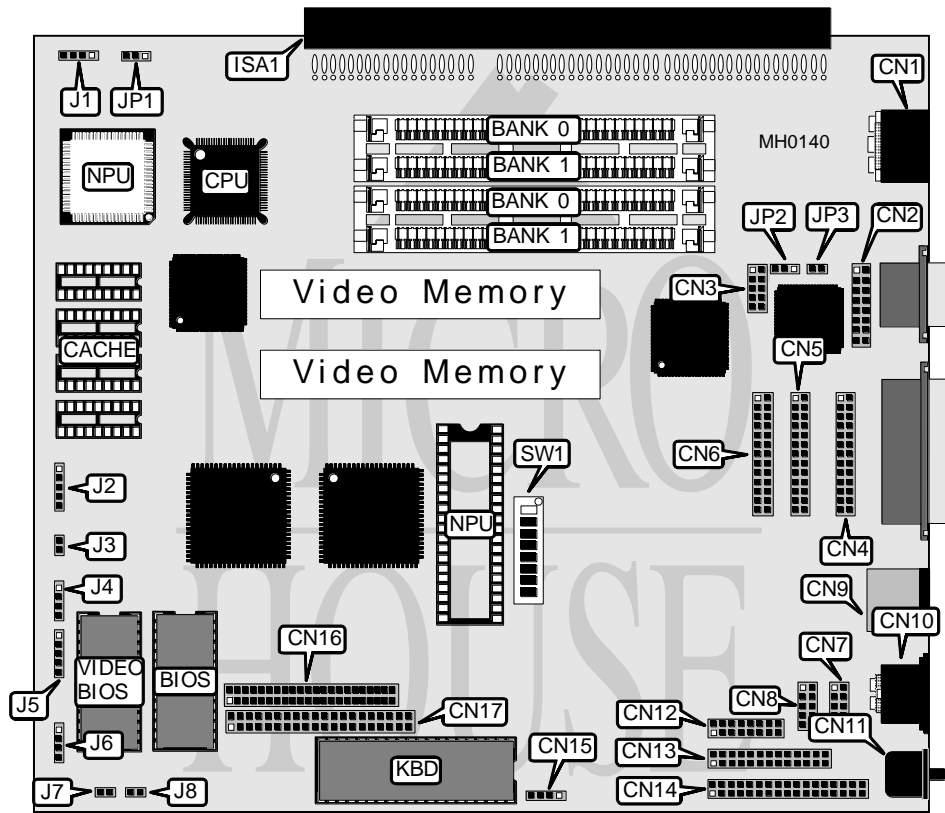


DATA BUSINESS SYSTEMS KEYBOARD PC

Processor	80286/80386SX
Processor Speed	12/16/20/25MHz
Chip Set	C & T
Max. Onboard DRAM	16MB
Cache	32KB (80386SX model only)
BIOS	AMI
Dimensions	236mm x 205mm
I/O Options	Bus mouse port, external keyboard connector, floppy interface, game port, IDE interface, parallel ports (3), serial ports (2), VGA port, Video port (TTL)
NPU Options	80287/80387SX



VIDEO SWITCH SETTINGS						
Function	SW1/4	SW1/5	SW1/6	SW1/7	SW1/8	JP2
Monochrome	Closed	Open	Closed	Open	Open	pins 1 & 2 closed
CGA	Open	Closed	Open	Closed	Closed	pins 2 & 3 closed
EGA	Open	Closed	Closed	Open	Open	pins 1 & 2 closed

Notes: For VGA mode, no switch configuration is necessary.

Continued on next page . . .

DATA BUSINESS SYSTEMS KEYBOARD PC

... continued from previous page

CONNECTIONS			
Purpose	Location	Purpose	Location
DC power	CN1	Hard & floppy drive power	CN15
Video port (TTL)	CN2	Internal IDE drive	CN16
VGA port	CN3	External IDE drive	CN17
Parallel port (LPT1)	CN4	16-bit ISA expansion slot (2/3 size)	ISA1
Parallel port (LPT2)	CN5	Speaker	J1
Parallel port (LPT3)	CN6	Integrated keyboard	J2
Serial port (COM1)	CN7	Turbo LED	J3
Serial port (COM2)	CN8	IDE interface LED	J4
Bus mouse port	CN9	Power LED & keylock	J5
Auxiliary keyboard	CN10	External battery	J6
Game port	CN12	Power switch	J7
Internal floppy drive	CN13	Reset switch	J8
External floppy drive	CN14		

USER CONFIGURABLE SETTINGS		
Function	Jumper/Switch	Position
Volume select maximum	CN11	max. clockwise
Volume select minimum	CN11	max. counter-clockwise
í CMOS memory normal operation	JP1	pins 1 & 2 closed
CMOS memory clear	JP1	pins 2 & 3 closed
í Memory select 0 wait states	JP3	Open
Memory select 1 wait state	JP3	Closed
í LPT2 (CN5) enabled	SW1/1	On
LPT2 (CN5) disabled	SW1/1	Off
í LPT3 (CN6) enabled	SW1/2	On
LPT3 (CN6) disabled	SW1/2	Off
í Game port (CN12) enabled	SW1/3	On
Game port (CN12) disabled	SW1/3	Off

DRAM CONFIGURATION		
Size	Bank 0	Bank 1
512KB	(2) 256K x 9	NONE
1MB	(2) 256K x 9	(2) 256K x 9
2MB	(2) 1M x 9	NONE
2.5MB	(2) 256K x 9	(2) 1M x 9
4MB	(2) 1M x 9	(2) 1M x 9
8MB	(2) 4M x 9	NONE
8.5MB	(2) 256K x 9	(2) 4M x 9
10MB	(2) 1M x 9	(2) 4M x 9
16MB	(2) 4M x 9	(2) 4M x 9

CACHE CONFIGURATION	
Size	Bank 0
32KB	(4) 16K x 4