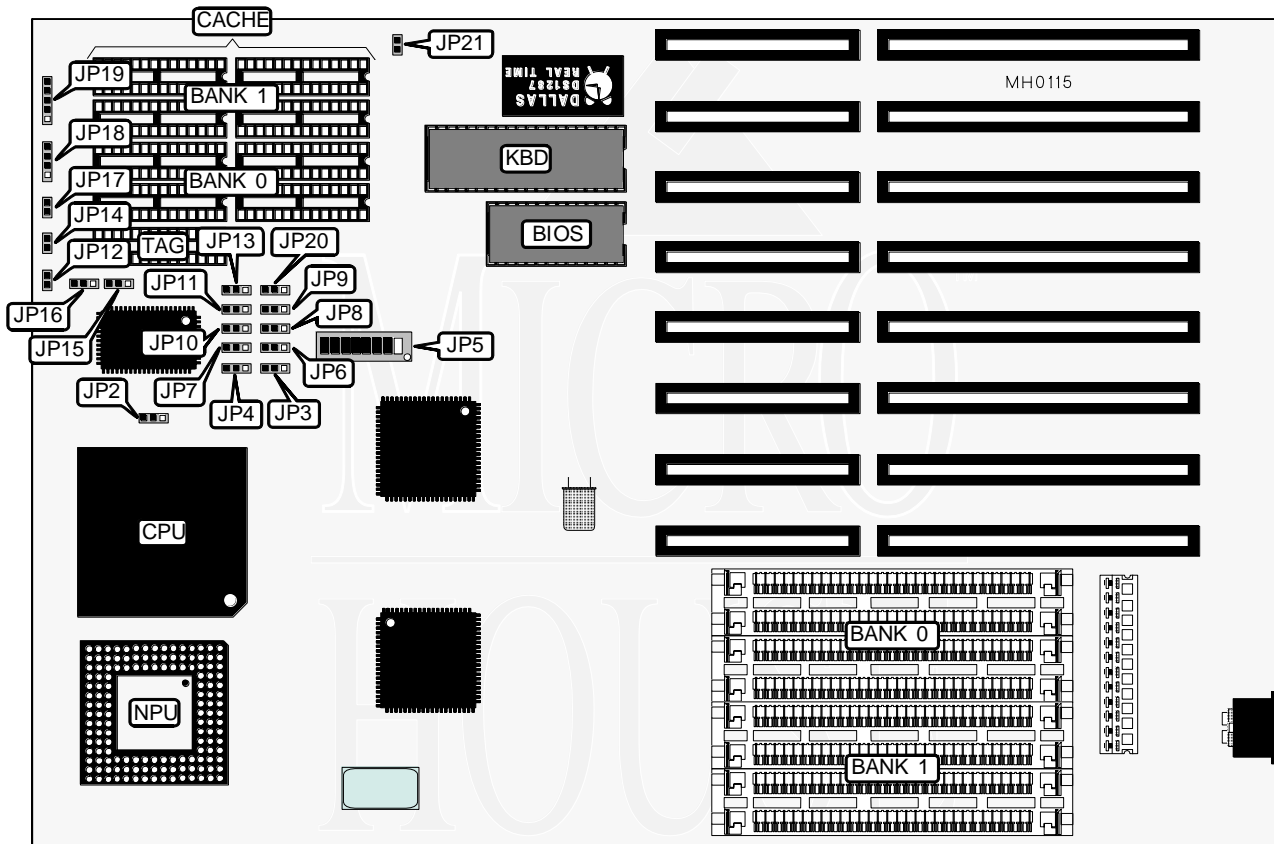


FIRST INTERNATIONAL COMPUTER, INC.

486-20/25/33/50SC (REV. A)

Processor	80486SX/80486DX
Processor Speed	20/25/33/50MHz
Chip Set	Symphony
Max. Onboard DRAM	32MB
Cache	64/128/256/1024KB
BIOS	AMI
Dimensions	330.2mm x 218.4mm
I/O Options	None
NPU Options	4167



CONNECTIONS			
Purpose	Location	Purpose	Location
Turbo switch	JP12	Speaker	JP18
Turbo LED	JP14	Power LED & keylock	JP19
Reset switch	JP17		

Continued on next page . . .

FIRST INTERNATIONAL COMPUTER, INC.

486-20/25/33/50SC (REV. A)

... continued from previous page

USER CONFIGURABLE SETTINGS		
Function	Jumper/Switch	Position
í Factory configured - do not alter	JP4	pins 2 & 3 closed
í CPU speed select iOSC/2	JP5/6	Off
CPU speed select iOSC/1	JP5/6	On
í Monitor type select monochrome	JP5/8	Off
Monitor type select color	JP5/8	On
í Factory configured - do not alter	JP20	pins 1 & 2 closed
í Factory configured - do not alter	JP21	pins 1 & 2 closed

DRAM CONFIGURATION		
Size	Bank 0	Bank 1
1MB	(4) 256K x 9	NONE
2MB	(4) 256K x 9	(4) 256K x 9
4MB	(4) 1M x 9	NONE
5MB	(4) 1M x 9	(4) 256K x 9
8MB	(4) 1M x 9	(4) 1M x 9
16MB	(4) 4M x 9	NONE
20MB	(4) 4M x 9	(4) 1M x 9
32MB	(4) 4M x 9	(4) 4M x 9

CACHE CONFIGURATION			
Size	Bank 0	Bank 1	TAG
64KB	(4) 8K x 8	(4) 8K x 8	(1) 8K x 8
128KB	(4) 32K x 8	NONE	(1) 32K x 8
256KB	(4) 32K x 8	(4) 32K x 8	(1) 32K x 8
1024KB	(4) 128K x 8	(4) 128K x 8	(1) 128K x 8

CACHE JUMPER CONFIGURATION										
Size	JP3	JP6	JP7	JP8	JP9	JP10	JP11	JP13	JP15	JP16
64KB	1 & 2	2 & 3	1 & 2	2 & 3	1 & 2	1 & 2	1 & 2	2 & 3	2 & 3	2 & 3
128KB	1 & 2	1 & 2	Open	1 & 2	1 & 2	1 & 2	2 & 3	open	1 & 2	1 & 2
256KB	1 & 2	2 & 3	2 & 3	2 & 3	1 & 2	2 & 3	2 & 3	2 & 3	2 & 3	2 & 3
1024KB	2 & 3	2 & 3	2 & 3	2 & 3	2 & 3	2 & 3	2 & 3	2 & 3	2 & 3	2 & 3

Note: Pins designated should be in the closed position.

CACHE SWITCH CONFIGURATION				
Size	JP5/3	JP5/4	JP5/5	JP5/7
64KB	Off	Off	Off	On
128KB	On	On	On	Off
256KB	Off	Off	Off	On
1024KB	Off	Off	Off	On

CPU TYPE CONFIGURATION			
Type	JP2	JP5/1	JP5/2
80486SX	pins 2 & 3 closed	Off	Off
80486DX	pins 1 & 2 closed	On	On

