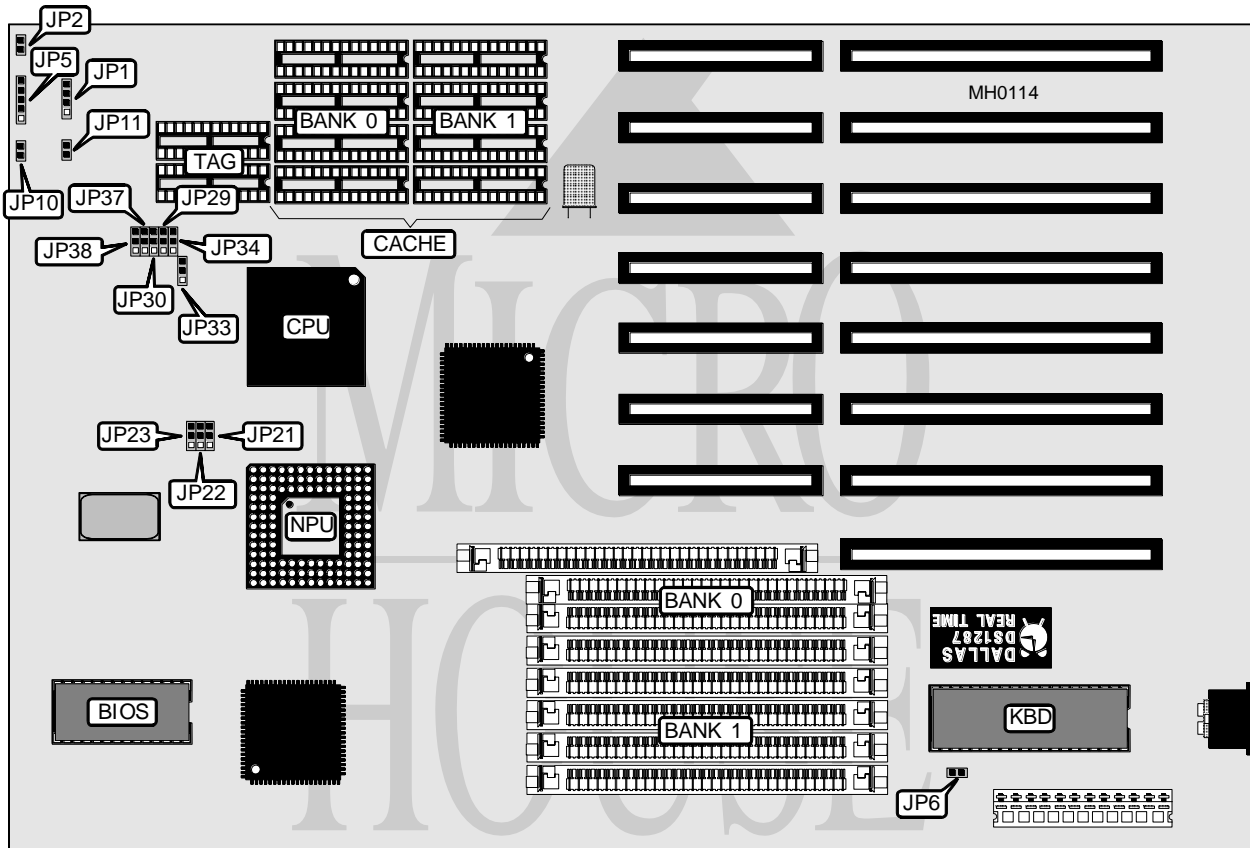


FIRST INTERNATIONAL COMPUTER, INC.

386-25/33/40SC (REV. A2)

Processor	80386DX
Processor Speed	25/33/40MHz
Chip Set	Symphony
Max. Onboard DRAM	32MB
Cache	32/64/128/256KB
BIOS	AMI/MR/Phoenix
Dimensions	330mm x 218mm
I/O Options	None
NPU Options	80387/3167



CONNECTIONS

Purpose	Location	Purpose	Location
Speaker	JP1	Turbo switch	JP10
Reset switch	JP2	Turbo LED	JP11
Power LED & keylock	JP5		

Continued on next page . . .

FIRST INTERNATIONAL COMPUTER, INC.
386-25/33/40SC (REV. A2)

... continued from previous page

USER CONFIGURABLE SETTINGS		
Function	Jumper	Position
í Monitor type select monochrome	JP6	Open
Monitor type select color	JP6	Closed
í Factory configured - do not alter	JP33	pins 2 & 3 closed

DRAM CONFIGURATION		
Size	Bank 0	Bank 1
1MB	(4) 256K x 9	NONE
2MB	(4) 256K x 9	(4) 256K x 9
4MB	(4) 1M x 9	NONE
5MB	(4) 1M x 9	(4) 256K x 9
8MB	(4) 1M x 9	(4) 1M x 9
16MB	(4) 4M x 9	NONE
17MB	(4) 4M x 9	(4) 256K x 9
20MB	(4) 4M x 9	(4) 1M x 9
32MB	(4) 4M x 9	(4) 4M x 9

CACHE CONFIGURATION			
Size	Bank 0	Bank 1	TAG
32KB	(4) 8K x 8	NONE	(2) 16K x 4
64KB	(4) 8K x 8	(4) 8K x 8	(2) 16K x 4
128KB	(4) 32K x 8	NONE	(2) 64K x 4
256KB	(4) 32K x 8	(4) 32K x 8	(2) 64K x 4

CACHE JUMPER CONFIGURATION								
Size	JP21	JP22	JP23	JP29	JP30	JP34	JP37	JP38
32KB	1 & 2	1 & 2	1 & 2	Open	1 & 2	1 & 2	1 & 2	1 & 2
64KB	2 & 3	1 & 2	1 & 2	1 & 2	1 & 2	1 & 2	2 & 3	1 & 2
128KB	2 & 3	2 & 3	1 & 2	Open	2 & 3	2 & 3	1 & 2	1 & 2
256KB	2 & 3	2 & 3	2 & 3	2 & 3	2 & 3	2 & 3	1 & 2	2 & 3

Note: Pins designated should be in the closed position.