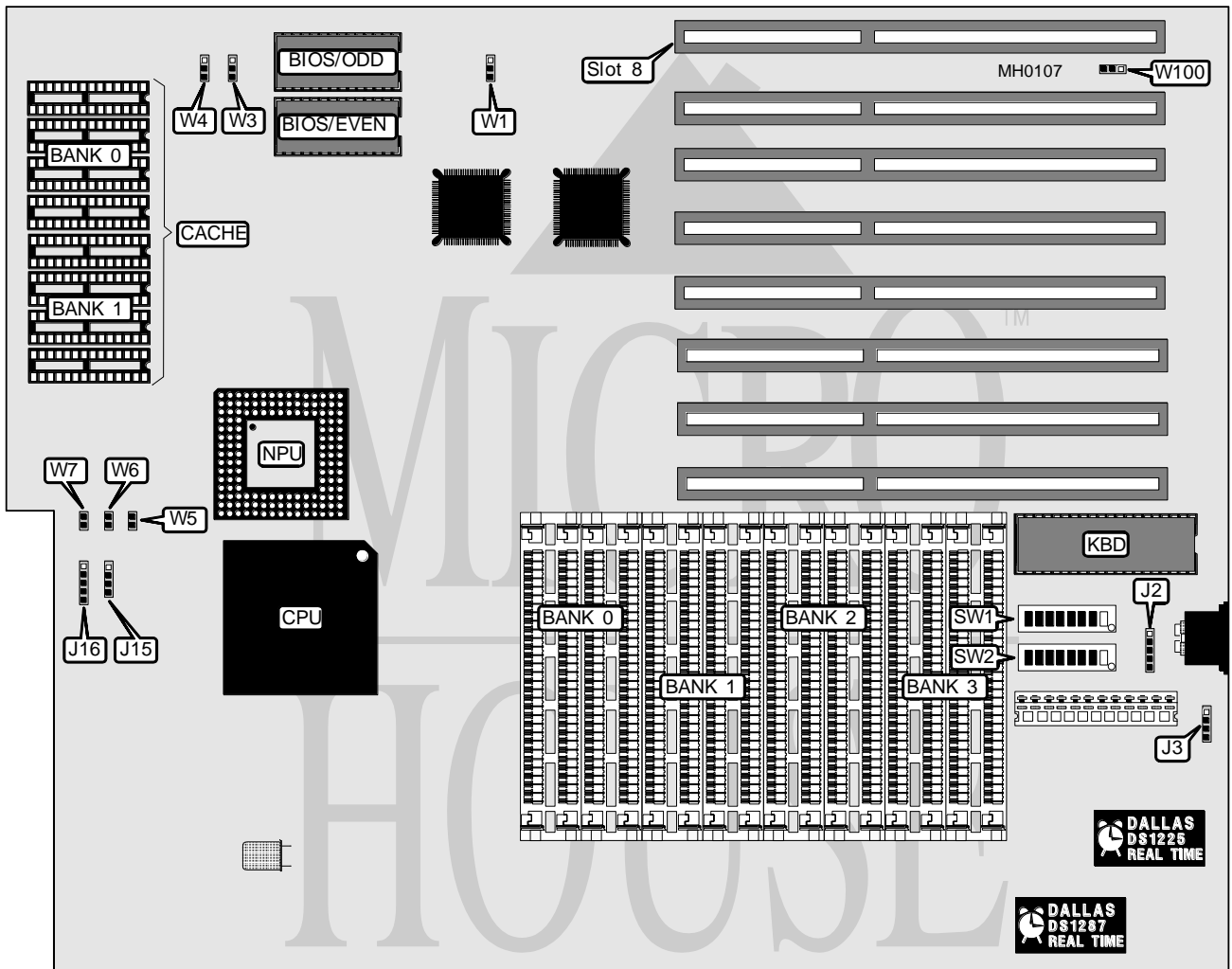


MICRONICS COMPUTERS, INC.

80486-EISA

Processor	80486DX
Processor Speed	25/33MHz
Chip Set	Micronics
Max. Onboard DRAM	64MB
Cache	64/128/256KB
BIOS	Phoenix
Dimensions	350mm x 304mm
I/O Options	None
NPU Options	4167



CONNECTIONS			
Purpose	Location	Purpose	Location
Auxiliary keyboard	J2	Reset switch	W5
External battery	J3	Turbo switch	W6
Speaker	J15	Turbo LED	W7
Power LED & keylock	J16		

Continued on next page . . .

MICRONICS COMPUTERS, INC.

80486 - EISA

... continued from previous page

USER CONFIGURABLE SETTINGS		
Function	Jumper/Switch	Position
í Factory configured - do not alter	SW1/1	On
í BIOS select onboard	SW1/2	Off
BIOS select external	SW1/2	On
í CPU speed select 33MHz	SW1/4	Off
CPU speed select 25MHz	SW1/4	On
í Factory configured - do not alter	SW1/5	Off
í Factory configured - do not alter	SW1/6	Off
í Monitor type select color	SW1/7	On
Monitor type select monochrome	SW1/7	Off
í Factory configured - do not alter	SW2/5	Off
í Video BIOS cacheing enabled	SW2/6	Off
Video BIOS cacheing disabled	SW2/6	On
í Address range 13MB to 15MB cacheable	SW2/7	Off
Address range 13MB to 15MB non-cacheable	SW2/7	On
í Factory configured - do not alter	SW2/8	Off
í Factory configured - do not alter	W1	Off
í Slot 8 standard select EISA	W100	pins 1 & 2 closed
Slot 8 standard select ISA	W100	pins 2 & 3 closed

DRAM CONFIGURATION				
Size	Bank 0	Bank 1	Bank 2	Bank 3
4MB	(4) 1M x 9	NONE	NONE	NONE
8MB	(4) 1M x 9	(4) 1M x 9	NONE	NONE
12MB	(4) 1M x 9	(4) 1M x 9	(4) 1M x 9	NONE
16MB	(4) 1M x 9	(4) 1M x 9	(4) 1M x 9	(4) 1M x 9
16MB	(4) 4M x 9	NONE	NONE	NONE
20MB	(4) 1M x 9	(4) 4M x 9	NONE	NONE
24MB	(4) 1M x 9	(4) 1M x 9	(4) 4M x 9	NONE
28MB	(4) 1M x 9	(4) 1M x 9	(4) 1M x 9	(4) 4M x 9
32MB	(4) 4M x 9	(4) 4M x 9	NONE	NONE
36MB	(4) 1M x 9	(4) 4M x 9	(4) 4M x 9	NONE
40MB	(4) 1M x 9	(4) 1M x 9	(4) 4M x 9	(4) 4M x 9
48MB	(4) 4M x 9	(4) 4M x 9	(4) 4M x 9	NONE
52MB	(4) 1M x 9	(4) 4M x 9	(4) 4M x 9	(4) 4M x 9
64MB	(4) 4M x 9	(4) 4M x 9	(4) 4M x 9	(4) 4M x 9

Continued on next page ...

MICRONICS COMPUTERS, INC.

80486-EISA

... continued from previous page

DRAM SWITCH CONFIGURATION					
Size	SW2/1	SW2/2	SW2/3	SW2/4	SW2/5
4MB	On	On	On	On	On
8MB	Off	On	On	On	On
12MB	On	Off	On	On	On
16MB	Off	Off	On	On	Off
16MB	On	On	Off	On	Off
20MB	On	On	Off	Off	Off
24MB	On	Off	On	Off	Off
28MB	Off	On	On	Off	Off
32MB	Off	On	Off	On	Off
36MB	On	Off	Off	Off	Off
40MB	Off	Off	On	Off	Off
48MB	On	Off	Off	On	Off
52MB	Off	Off	Off	Off	Off
64MB	Off	Off	Off	On	Off

CACHE CONFIGURATION		
Size	Bank 0	Bank 1
64KB	(4) 8K x 8	(4) 8K x 8
128KB	(4) 32K x 8	NONE
256KB	(4) 32K x 8	(4) 32K x 8

CACHE JUMPER/SWITCH CONFIGURATION				
Size	SW1/3	SW1/8	W3	W4
64KB	Off	Off	pins 1 & 2 closed	pins 1 & 2 closed
128KB	On	On	pins 1 & 2 closed	pins 2 & 3 closed
256KB	On	Off	pins 2 & 3 closed	pins 2 & 3 closed