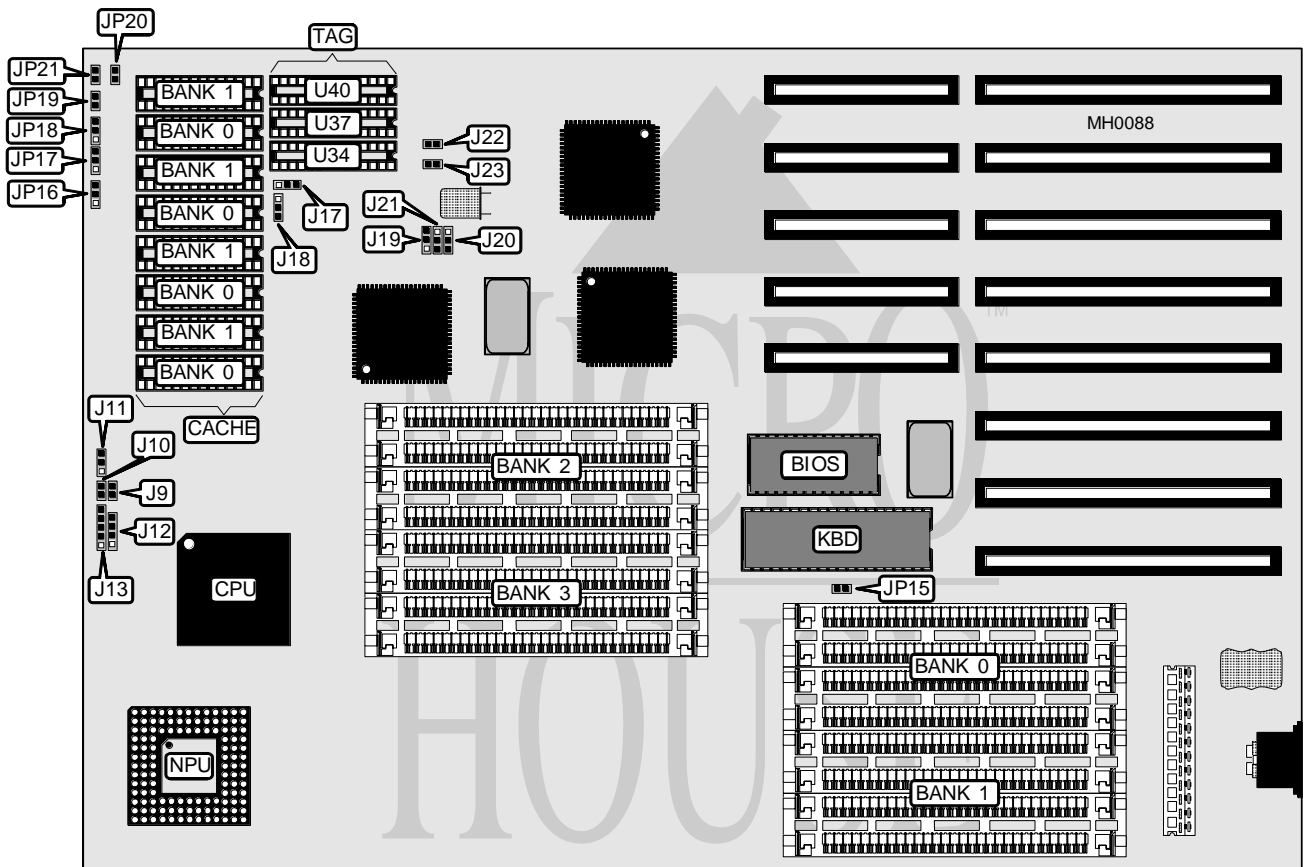


# JOINDATA SYSTEMS, INC.

## G 3 8 6 K

<b>Processor</b>	80386DX
<b>Processor Speed</b>	33/40MHz
<b>Chip Set</b>	C & T Peak-DM
<b>Max. Onboard DRAM</b>	64MB
<b>Cache</b>	32/64/128/256KB
<b>BIOS</b>	AMI
<b>Dimensions</b>	339mm x 228mm
<b>I/O Options</b>	None
<b>NPU Options</b>	80387/3167



CONNECTIONS			
Purpose	Location	Purpose	Location
Reset switch	J9	Speaker	J12
Turbo LED	J10	Power LED & Keylock	J13
Turbo switch	J11	External battery	J14

USER CONFIGURABLE SETTINGS			
Function	Jumper	Position	
Monitor type select color	JP15	Closed	
Monitor type select monochrome	JP15	Open	

Continued on next page . . .

## JOINDATA SYSTEMS, INC.

## G386K

... continued from previous page

DRAM CONFIGURATION				
Size	Bank 0	Bank 1	Bank 2	Bank 3
1MB	(4) 256K x 9	NONE	NONE	NONE
2MB	(4) 256K x 9	(4) 256K x 9	NONE	NONE
4MB	(4) 1M x 9	NONE	NONE	NONE
5MB	(4) 256K x 9	(4) 1M x 9	NONE	NONE
6MB	(4) 256K x 9	(4) 1M x 9	NONE	NONE
8MB	(4) 1M x 9	(4) 1M x 9	NONE	NONE
10MB	(4) 256K x 9	(4) 256K x 9	(4) 1M x 9	(4) 1M x 9
16MB	(4) 1M x 9	(4) 1M x 9	(4) 1M x 9	(4) 1M x 9
16MB	(4) 4M x 9	NONE	NONE	NONE
17MB	(4) 4M x 9	(4) 256K x 9	NONE	NONE
20MB	(4) 4M x 9	(4) 1M x 9	NONE	NONE
24MB	(4) 1M x 9	(4) 1M x 9	(4) 4M x 9	NONE
40MB	(4) 1M x 9	(4) 1M x 9	(4) 4M x 9	(4) 4M x 9
64MB	(4) 4M x 9	(4) 4M x 9	(4) 4M x 9	(4) 4M x 9

CACHE CONFIGURATION					
Size	TAG	Bank 0	Bank 1	TAG (U34/U37)	TAG (U40)
32KB	8-bit	(4) 8K x 8	NONE	(2) 16K x 4	NONE
32KB	10-bit	(4) 8K x 8	NONE	(2) 16K x 4	(1) 16K x 4
64KB	8-bit	(4) 8K x 8	(4) 8K x 8	(2) 16K x 4	NONE
64KB	10-bit	(4) 8K x 8	(4) 8K x 8	(2) 16K x 4	(1) 16K x 4
128KB	8-bit	(4) 32K x 8	NONE	(2) 64K x 4	NONE
128KB	10-bit	(4) 32K x 8	NONE	(2) 64K x 4	(1) 64K x 4
256KB	8-bit	(4) 32K x 8	(4) 32K x 8	(2) 64K x 4	NONE
256KB	10-bit	(4) 32K x 8	(4) 32K x 8	(2) 64K x 4	(1) 64K x 4

CACHE JUMPER CONFIGURATION							
Size	J17	J18	J19	J20	J21	J22	J23
32KB	1 & 2	1 & 2	2 & 3	1 & 2	2 & 3	Open	Open
64KB	1 & 2	1 & 2	2 & 3	1 & 2	1 & 2	Open	Closed
128KB	2 & 3	2 & 3	1 & 2	2 & 3	2 & 3	Open	Open
256KB	2 & 3	2 & 3	1 & 2	2 & 3	1 & 2	Closed	Open

Note: Pins designated should be in the closed position.

CACHE TAG SIZE JUMPER CONFIGURATION							
Size	TAG	JP16	JP17	JP18	JP19	JP20	JP21
32 - 256KB	10-bit	2 & 3	1 & 2	1 & 2	Closed	Open	Closed
32KB	8-bit	Open	2 & 3	Open	Closed	Open	Closed
64KB	8-bit	Open	Open	1 & 2	Closed	Open	Closed
128KB	8-bit	1 & 2	Open	1 & 2	Open	Open	Closed
256KB	8-bit	1 & 2	1 & 2	1 & 2	Open	Closed	Open

Note: Pins designated should be in the closed position.