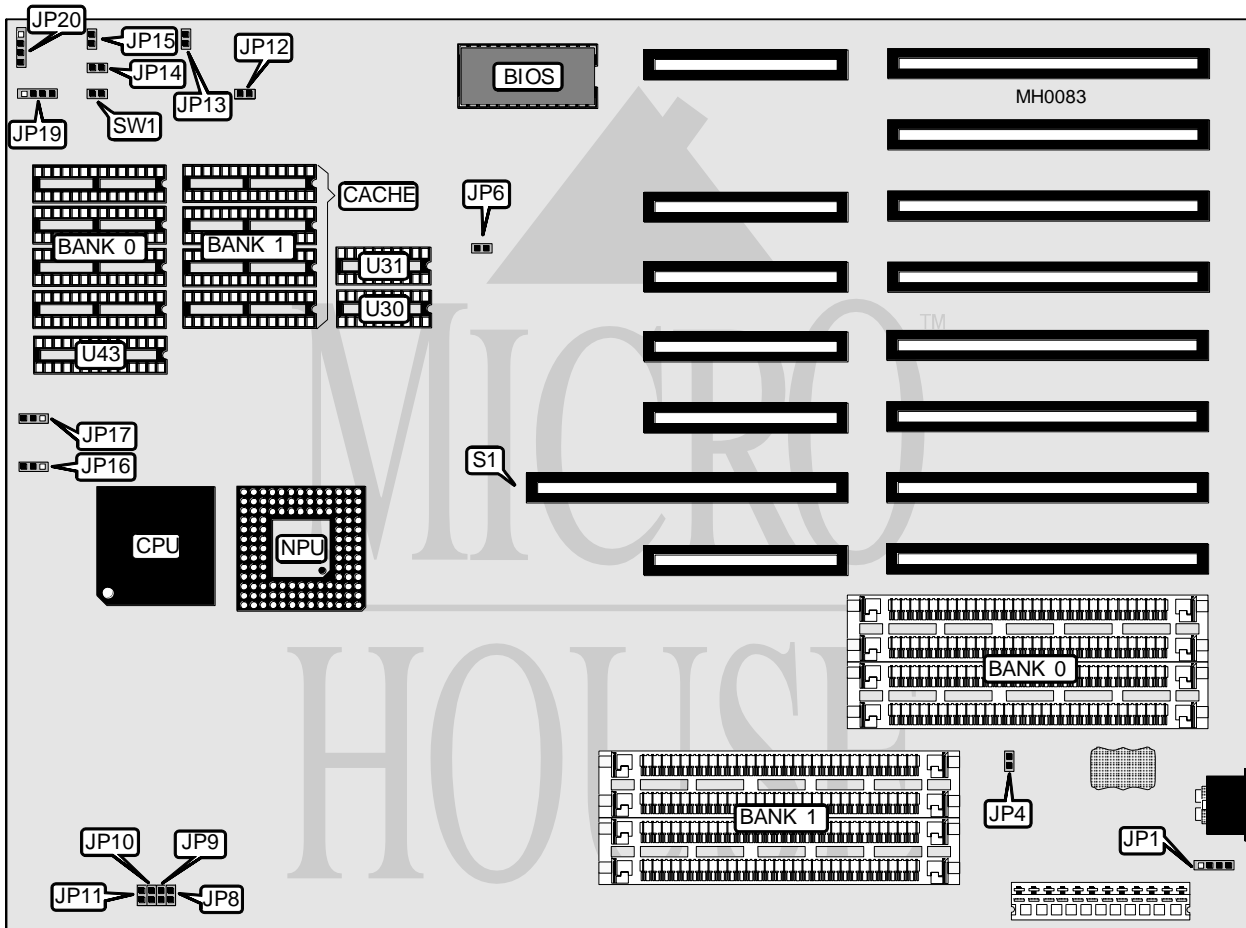


# HAWK COMPUTERS

## 386 CS

<b>Processor</b>	80386DX
<b>Processor Speed</b>	25/33MHz
<b>Chip Set</b>	SIS
<b>Max. Onboard DRAM</b>	32MB
<b>Cache</b>	32/64/128/256KB
<b>BIOS</b>	AMI
<b>Dimensions</b>	330mm x 241mm
<b>I/O Options</b>	32-bit external memory card slot
<b>NPU Options</b>	80387/3167



### CONNECTIONS

Purpose	Location	Purpose	Location
External battery	JP1	Speaker	JP20
Turbo LED	JP14	32-bit external memory card	S1
Turbo switch	JP15	Reset switch	SW1
Power LED & keylock	JP19		

*Continued on next page . . .*

## HAWK COMPUTERS

## 386 CS

... continued from previous page

USER CONFIGURABLE SETTINGS		
Function	Jumper	Position
í Factory configured - do not alter	JP4	pins 1 & 2 closed
í Monitor type select color	JP13	pins 1 & 2 closed
Monitor type select monochrome	JP13	pins 1 & 2 open
í Factory configured - do not alter	JP16	pins 2 & 3 closed
í Factory configured - do not alter	JP17	pins 2 & 3 closed

DRAM CONFIGURATION				
Size	Bank 0	Bank 1	Bank 2	Bank 3
1MB	(4) 256K x 9	NONE	NONE	NONE
2MB	(4) 256K x 9	(4) 256K x 9	NONE	NONE
4MB	(4) 1M x 9	NONE	NONE	NONE
8MB	(4) 1M x 9	(4) 1M x 9	NONE	NONE
16MB	(4) 4M x 9	NONE	NONE	NONE
32MB	(4) 4M x 9	(4) 4M x 9	NONE	NONE
48MB	(4) 4M x 9	(4) 4M x 9	(4) 4M x 9	NONE
64MB	(4) 4M x 9	(4) 4M x 9	(4) 4M x 9	(4) 4M x 9

Note: Banks 2 and 3 are utilized when a 32-bit external memory card is installed at S1.

CACHE CONFIGURATION				
Size	Bank 0	Bank 1	TAG (U30 & U31)	TAG (U43)
32KB	(4) 8K x 8	NONE	(2) 16K x 4	NONE
64KB	(4) 8K x 8	(4) 8K x 8	(2) 16K x 4	NONE
128KB	(4) 32K x 8	NONE	NONE	(1) 32K x 8
256KB	(4) 32K x 8	(4) 32K x 8	NONE	(1) 32K x 8

CACHE JUMPER CONFIGURATION					
Size	JP8	JP9	JP10	JP11	JP12
128 byte internal	Closed	Closed	Closed	Closed	Open
32KB	Open	Open	Open	Open	pins 2 & 3 closed
64KB	Open	Open	Open	Open	pins 1 & 2 closed
128KB	Open	Open	Open	Open	pins 1 & 2 closed
256KB	Open	Open	Open	Open	pins 1 & 2 closed