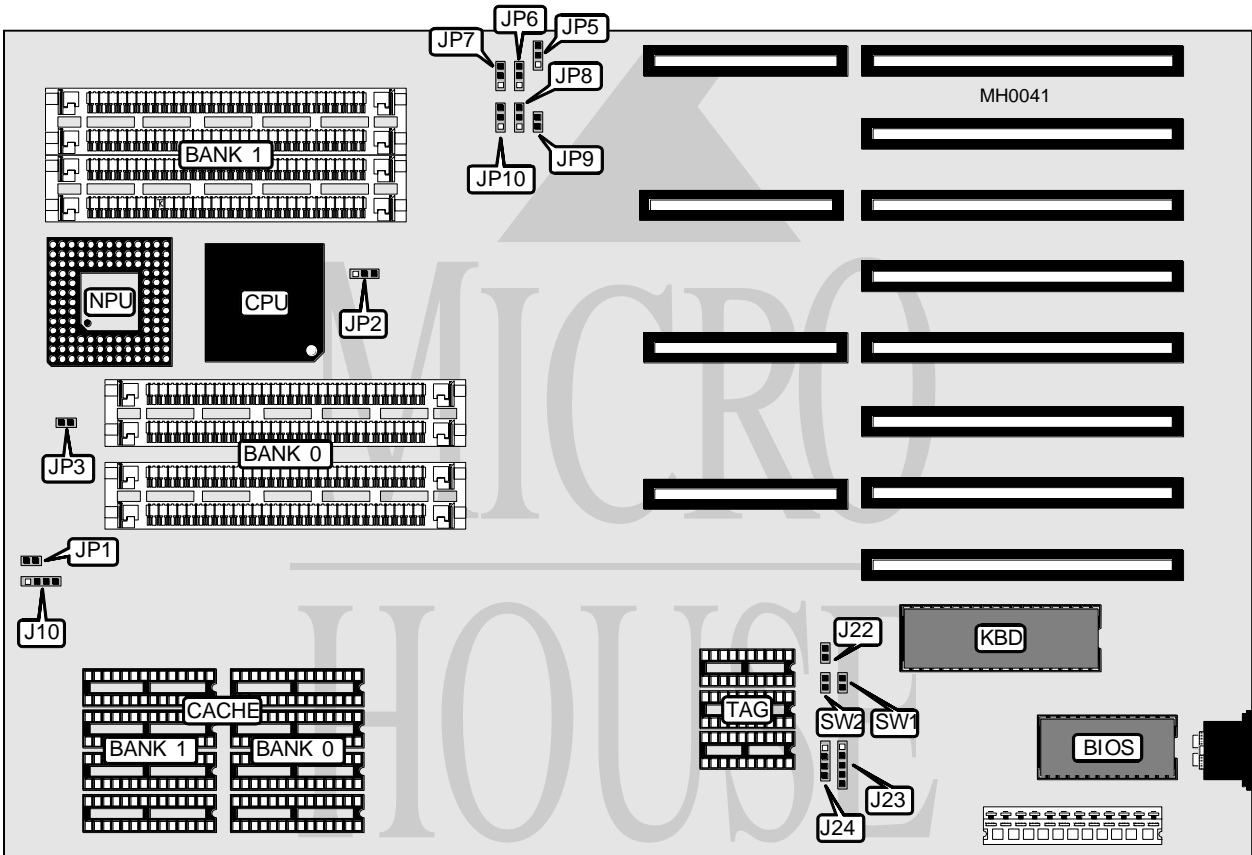


COMPUSYSTEMS, INC.

PEARL 4900

Processor	80386DX
Processor Speed	33/40MHz
Chip Set	SIS
Max. Onboard DRAM	32MB
Cache	64/128/256KB
BIOS	AMI
Dimensions	330mm x 214mm
I/O Options	None
NPU Options	80387/3167



CONNECTIONS			
Purpose	Location	Purpose	Location
External battery	J10	Speaker	J24
Turbo LED	J22	Reset switch	SW1
Power LED & Keylock	J23	Turbo switch	SW2

Continued on next page . . .

COMPUSYSTEMS, INC.

PEARL 4900

... continued from previous page

USER CONFIGURABLE SETTINGS

Function	Jumper	Position
í Monitor type select monochrome	JP1	Open
Monitor type select color	JP1	Closed
í CMOS memory normal operation	JP2	pins 2 & 3 closed
CMOS memory clear	JP2	pins 1 & 2 closed
í Bus speed select ATCLK/6	JP3	Open
Bus speed select ATCLK/8	JP3	Closed
í Factory configured - do not alter	JP10	pins 1 & 2 closed

Note: The location of JP3 is unidentified.

DRAM CONFIGURATION

Size	Bank 0	Bank 1
1MB	(4) 256K x 9	NONE
2MB	(4) 256K x 9	(4) 256K x 9
4MB	(4) 1M x 9	NONE
5MB	(4) 256K x 9	(4) 1M x 9
8MB	(4) 1M x 9	(4) 1M x 9
16MB	(4) 4M x 9	NONE
20MB	(4) 1M x 9	(4) 4M x 9
32MB	(4) 4M x 9	(4) 4M x 9

CACHE CONFIGURATION

Size	Bank 0	Bank 1	TAG
64KB	(4) 8K x 8	(4) 8K x 8	(3) 16K x 4
128KB	(4) 32K x 8	NONE	(3) 16K x 4
256KB	(4) 32K x 8	(4) 32K x 8	(3) 16K x 4

CACHE JUMPER CONFIGURATION

Size	JP5	JP6	JP7	JP8	JP9
64KB	2 & 3	1 & 2	1 & 2	Open	2 & 3
128KB	2 & 3	1 & 2	2 & 3	Closed	2 & 3
256KB	2 & 3	2 & 3	2 & 3	Closed	1 & 2

Note: Pins designated should be in the closed position.