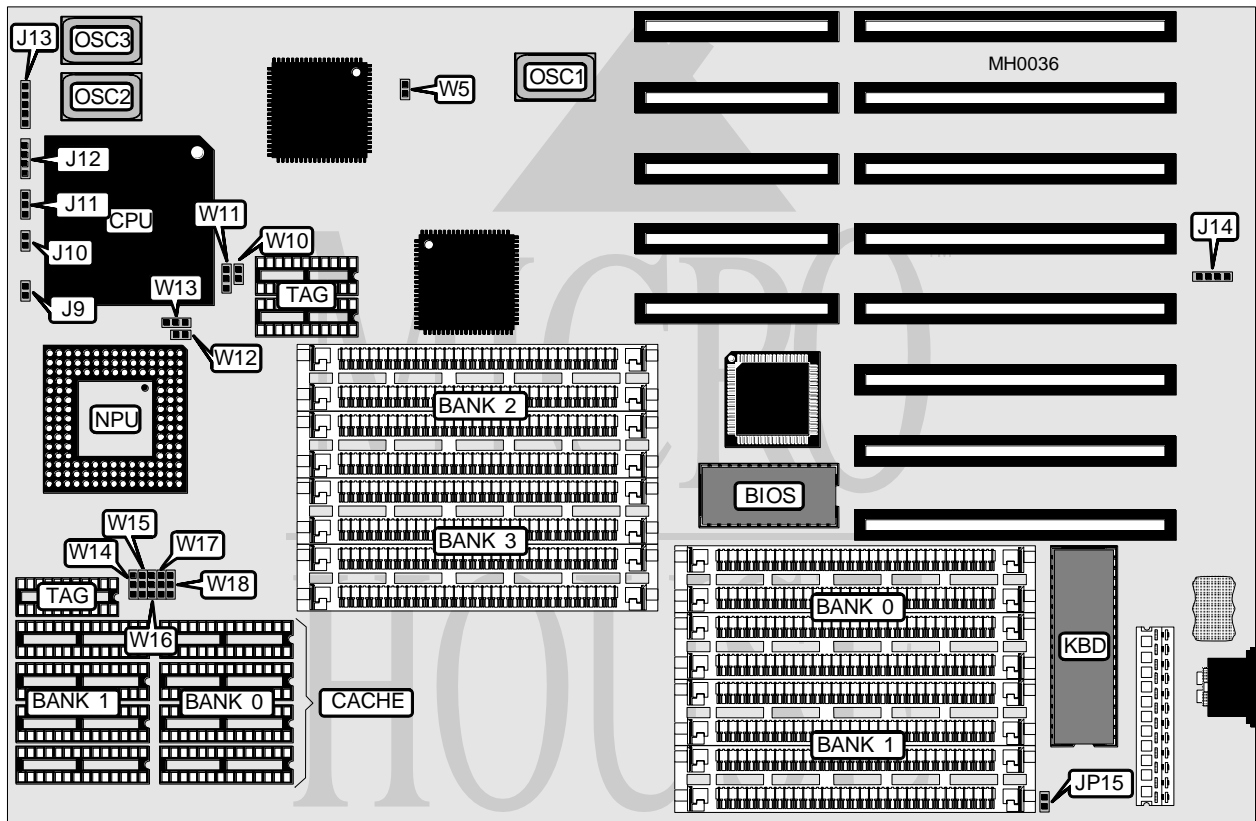


# JOINDATA SYSTEMS, INC.

## G 486 U / G 486 U S X

<b>Processor</b>	80486SX/80487SX/80486DX
<b>Processor Speed</b>	20/25/33/50MHz
<b>Chip Set</b>	UMC
<b>Max. Onboard DRAM</b>	64MB
<b>Cache</b>	64/128/256KB
<b>BIOS</b>	AMI/MR
<b>Dimensions</b>	215mm x 330mm
<b>I/O Options</b>	None
<b>NPU Options</b>	4167



CONNECTIONS			
Purpose	Location	Purpose	Location
Reset switch	J9	Speaker	J12
Turbo switch	J11	Power LED & keylock	J13
Turbo LED	J10	External battery	J14

Continued on next page . . .

# JOINDATA SYSTEMS, INC.

## G 4 8 6 U / 4 8 6 U S X

... continued from previous page

### USER CONFIGURABLE SETTINGS

Function	Jumper	Position
í Monitor type select color	JP15	Closed
Monitor type select monochrome	JP15	Open

### DRAM CONFIGURATION

Size	Bank 0	Bank 1	Bank 2	Bank 3
1MB	(4) 256K x 9	NONE	NONE	NONE
2MB	(4) 256K x 9	(4) 256K x 9	NONE	NONE
3MB	(4) 256K x 9	(4) 256K x 9	(4) 256K x 9	NONE
4MB	(4) 256K x 9	(4) 256K x 9	(4) 256K x 9	(4) 256K x 9
4MB	(4) 1M x 9	NONE	NONE	NONE
5MB	(4) 256K x 9	(4) 1 M x 9	NONE	NONE
6MB	(4) 256K x 9	(4) 256K x 9	(4) 1 M x 9	NONE
8MB	(4) 1M x 9	(4) 1M x 9	NONE	NONE
9MB	(4) 256K x 9	(4) 1M x 9	(4) 1M x 9	NONE
10MB	(4) 256K x 9	(4) 256K x 9	(4) 1M x 9	(4) 1M x 9
12MB	(4) 1M x 9	(4) 1M x 9	(4) 1M x 9	NONE
16MB	(4) 1M x 9	(4) 1M x 9	(4) 1M x 9	(4) 1M x 9
16MB	(4) 4M x 9	NONE	NONE	NONE
20MB	(4) 1M x 9	(4) 4M x 9	NONE	NONE
24MB	(4) 1M x 9	(4) 1M x 9	(4) 4M x 9	NONE
32MB	(4) 4M x 9	(4) 4M x 9	NONE	NONE
36MB	(4) 1M x 9	(4) 4M x 9	(4) 4M x 9	NONE
40MB	(4) 1M x 9	(4) 1M x 9	(4) 4M x 9	(4) 4M x 9
48MB	(4) 4M x 9	(4) 4M x 9	(4) 4M x 9	NONE
64MB	(4) 4M x 9	(4) 4M x 9	(4) 4M x 9	(4) 4M x 9

### CACHE CONFIGURATION

Size	Bank 0	Bank 1	TAG
64KB	(4) 8K x 8	(4) 8K x 8	(3) 16K x 4
128KB	(4) 32K x 8	NONE	(3) 16K x 4
256KB	(4) 32K x 8	(4) 32K x 8	(3) 16K x 4

### CACHE JUMPER CONFIGURATION

Size	W14	W15	W16	W17	W18
64KB	1 & 2	Open	1 & 2	1 & 2	2 & 3
128KB	2 & 3	1 & 2	1 & 2	2 & 3	2 & 3
256KB	1 & 2	2 & 3	2 & 3	2 & 3	2 & 3

Note: Pins designated should be in the closed position.

### CPU TYPE CONFIGURATION

Type	W5	W10	W11	W12	W13
80486SX	Closed	Open	Open	Open	pins 1 & 2 closed
80487SX	Open	Closed	pins 2 & 3 closed	Closed	pins 2 & 3 closed
80486DX	Open	Closed	pins 1 & 2 closed	Closed	pins 2 & 3 closed