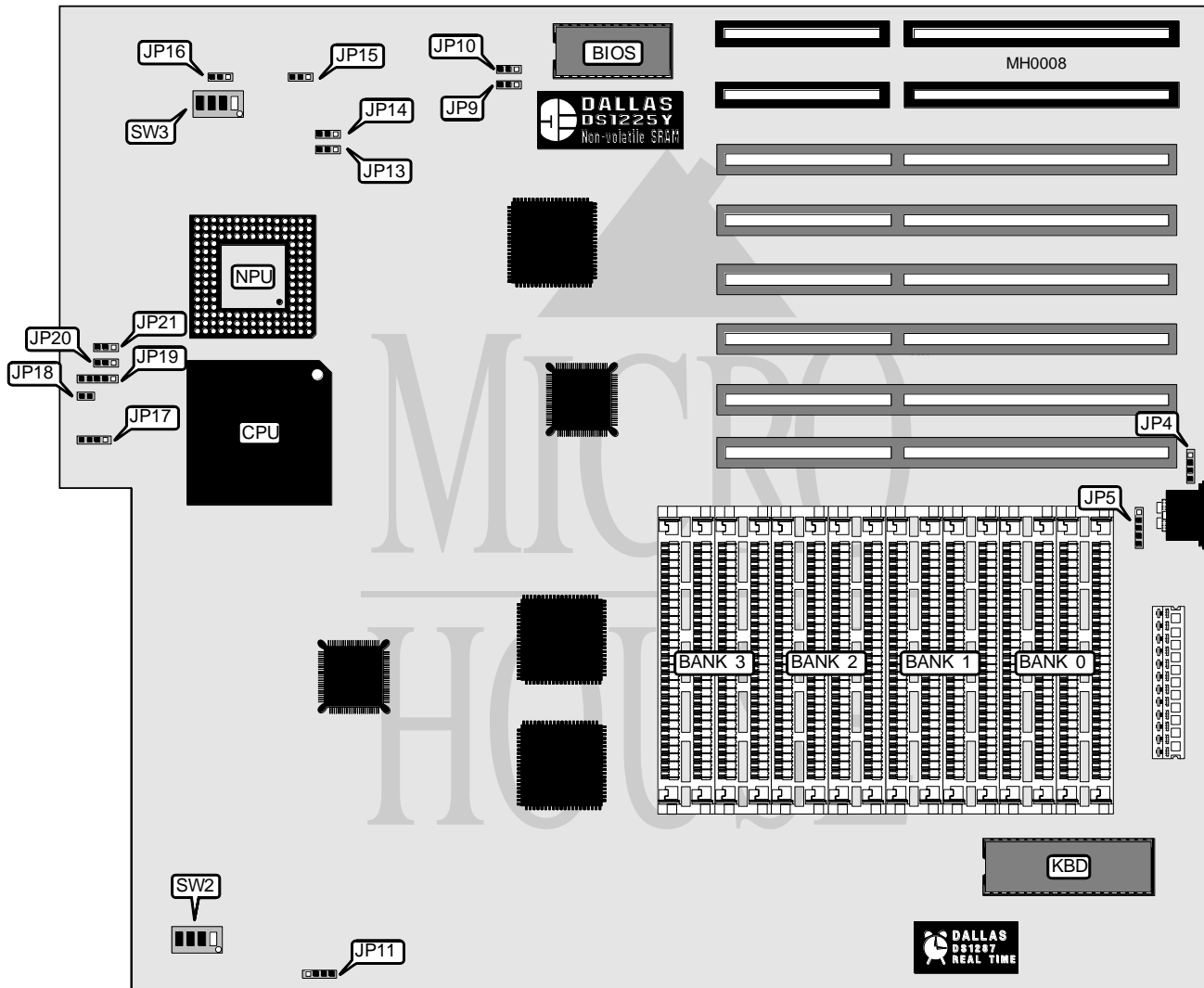


# CACHE COMPUTERS, INC.

## CACHE 486-25/33 EISA (MODEL 321)

<b>Processor</b>	80486DX
<b>Processor Speed</b>	25/33MHz
<b>Chip Set</b>	Intel
<b>Max. Onboard DRAM</b>	64MB
<b>Cache</b>	128/256KB
<b>BIOS</b>	Phoenix
<b>Dimensions</b>	355mm x 304mm
<b>I/O Options</b>	None
<b>NPU Options</b>	4167



CONNECTIONS			
Purpose	Location	Purpose	Location
External battery	JP4	Reset	JP18
Auxiliary keyboard	JP5	Power LED & keylock	JP19
Speaker	JP17		

Continued on next page . . .

## CACHE COMPUTERS, INC.

## CACHE 486-25/33 EISA (MODEL 321)

... continued from previous page

USER CONFIGURABLE SETTINGS		
Function	Jumper	Position
í Factory configured - do not alter	JP11	N/A

DRAM CONFIGURATION				
Size	Bank 0	Bank 1	Bank 2	Bank 3
1MB	(4) 256K x 9	NONE	NONE	NONE
2MB	(4) 256K x 9	(4) 256K x 9	NONE	NONE
3MB	(4) 256K x 9	(4) 256K x 9	(4) 256K x 9	NONE
4MB	(4) 256K x 9	(4) 256K x 9	(4) 256K x 9	(4) 256K x 9
4MB	(4) 1M x 9	NONE	NONE	NONE
8MB	(4) 1M x 9	(4) 1M x 9	NONE	NONE
12MB	(4) 1M x 9	(4) 1M x 9	(4) 1M x 9	NONE
16MB	(4) 1M x 9	(4) 1M x 9	(4) 1M x 9	(4) 1M x 9
16MB	(4) 4M x 9	NONE	NONE	NONE
32MB	(4) 4M x 9	(4) 4M x 9	NONE	NONE
48MB	(4) 4M x 9	(4) 4M x 9	(4) 4M x 9	NONE
64MB	(4) 4M x 9	(4) 4M x 9	(4) 4M x 9	(4) 4M x 9

DRAM JUMPER CONFIGURATION				
SIMM Size	JP9	JP10	JP13	JP14
256KB	pins 1&2 closed	pins 2&3 closed	pins 2&3 closed	pins 2&3 closed
1MB	pins 1&2 closed	pins 1&2 closed	pins 2&3 closed	pins 2&3 closed
4MB	pins 2&3 closed	pins 1&2 closed	pins 1&2 closed	pins 1&2 closed

DRAM SWITCH CONFIGURATION				
SIMM Size	SW3/1	SW3/2	SW3/3	SW3/4
256KB	On	Off	Off	Off
1MB	Off	Off	On	Off
4MB	Off	On	On	Off

CACHE CONFIGURATION	
Size	Bank 0
128KB	(4) 32K x 8
256KB	(8) 32K x 8

Note: Locations and sizes of cache and tag are unknown.

CACHE JUMPER CONFIGURATION				
Size	JP15	JP16	JP20	JP21
128KB	pins 1 & 2 closed	pins 2 & 3 closed	pins 2 & 3 closed	pins 2 & 3 closed
256KB	pins 2 & 3 closed	pins 1 & 2 closed	pins 1 & 2 closed	pins 1 & 2 closed

CPU SPEED CONFIGURATION					
CPU speed	Bus speed	SW2/1	SW2/2	SW2/3	SW2/4
25MHz	8.33MHz	On	On	Off	Off
33MHz	8.25MHz	Off	On	Off	Off

