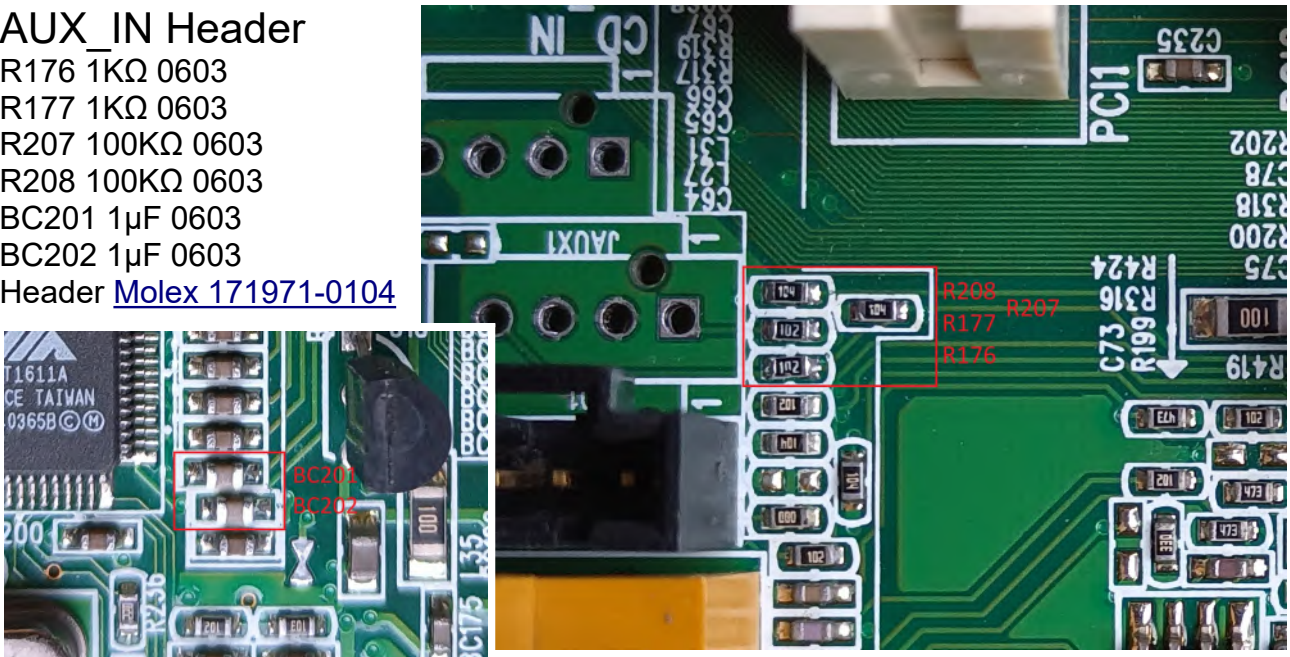


How to add the missing headers to a THTF OEM version of the MSI MS-6368 Ver 5.0 Motherboard

AUX_IN Header

- R176 1K Ω 0603
- R177 1K Ω 0603
- R207 100K Ω 0603
- R208 100K Ω 0603
- BC201 1 μ F 0603
- BC202 1 μ F 0603
- Header [Molex 171971-0104](#)



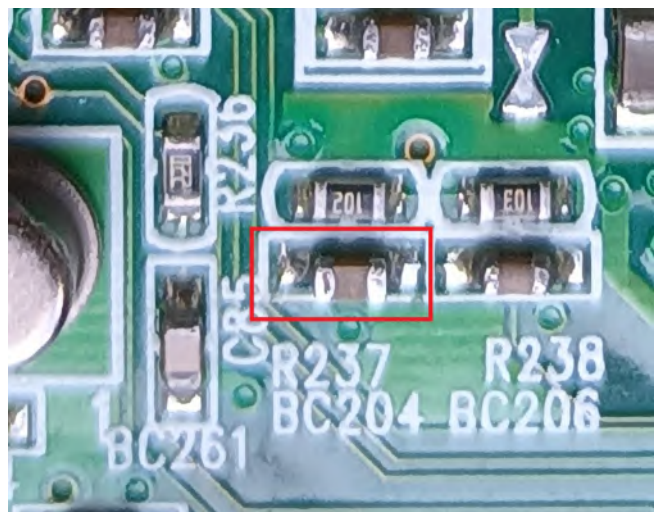
MODEM_IN Header

- BC184 1 μ F 0603
- BC203 1 μ F 0603
- Header [Molex 171971-0104](#)



PC Speaker via soundcard

- BC204 1 μ F 0603



CNR Header

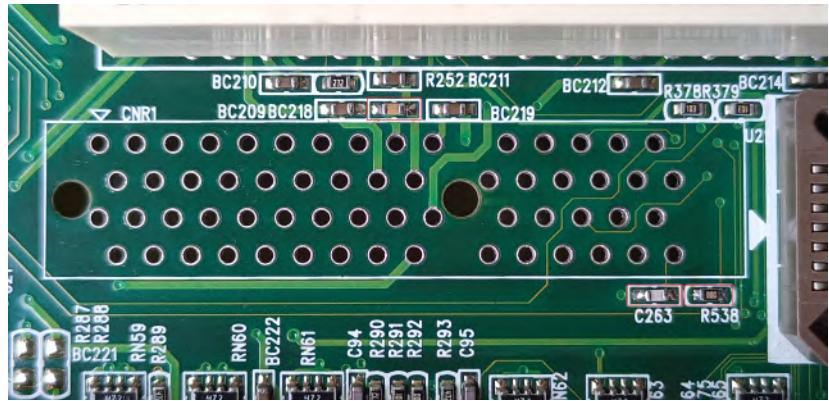
BC218 100nF 0603

C263 10pF 0603

R538 0Ω 0603

Header

[TE Connectivity 5650090-6](#)



Ethernet status LED's

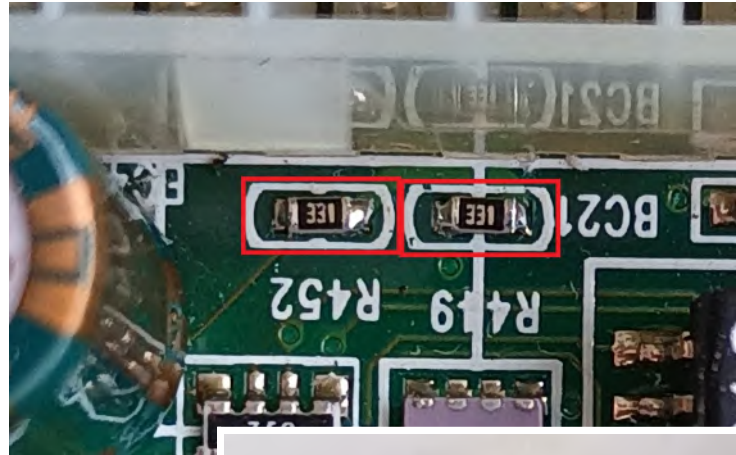
R449 330Ω 0603

R452 330Ω 0603

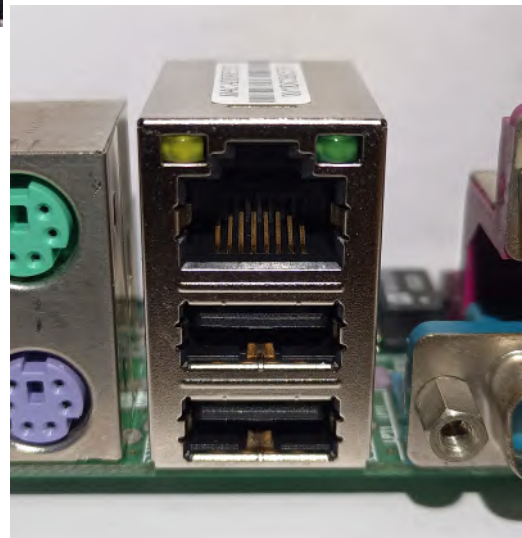
Also need to replace the header for one with LED's, currently there are almost no headers that don't have magnetics so you need to make your own from two parts.

[Amphenol RJE361882415](#)

[GCT USB1035-GF-P-0-B-B](#)



Open up the USB3.0 Ethernet combo header and slide the USB ports out the front. Remove the back metal from the USB2.0 header and slide it opening of the combo header. Close the newly made USB2.0 Ethernet combo header and replace the original header without the LED's with it.



IrDA Header

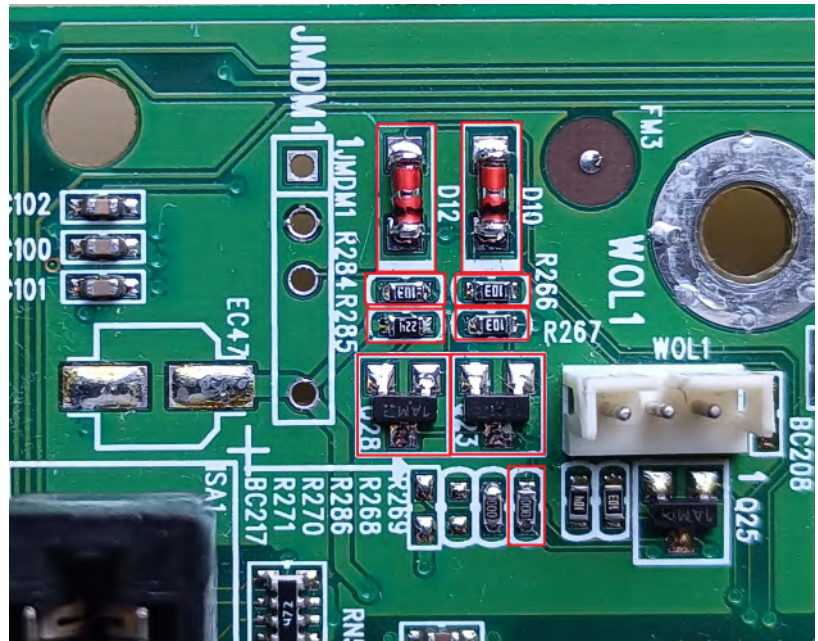
Just a 5 pin header



Wake On Ring Header

R284 10KΩ 0603
 R285 220KΩ 0603
 R286 0Ω 0603
 Q28 2N3904 SOT23
 5 pin header
 (EC47 47μF 16V Not used)

For Wake On Ring on the
 Serial Ports (COM1 & COM2)
 D10 1N4148 MiniMELF
 D12 1N4148 MiniMELF
 R266 10KΩ 0603
 R267 10KΩ 0603
 R286 0Ω 0603 (again)
 Q23 NPN 3904 SOT23



S3(STR) Sleep RAM Power Circuit

The original THTF board is missing the circuit to power the ram in standby mode.

To restore this functionality remove the following parts.
 RN40, RN9 and RN11 close to the RAM slots.

Check if there is no shorts between the two sides of the
 removed parts, after that place the following parts.

R25 10KΩ 0603
 R540 10KΩ 0603
 R542 4.7KΩ 0603
 R543 4.7KΩ 0603
 Q58 2N3906 SOT23
 Q59 2N3904 SOT23
 Q7 [RF1S45N02LSM](#)
 or [AHK6030LX](#) or
[PHD66NQ03LT](#) or
 similar logic level N
 MOSFET

After this it is save to
 use the S3(STR)
 option in the regular
 MSI BIOS

