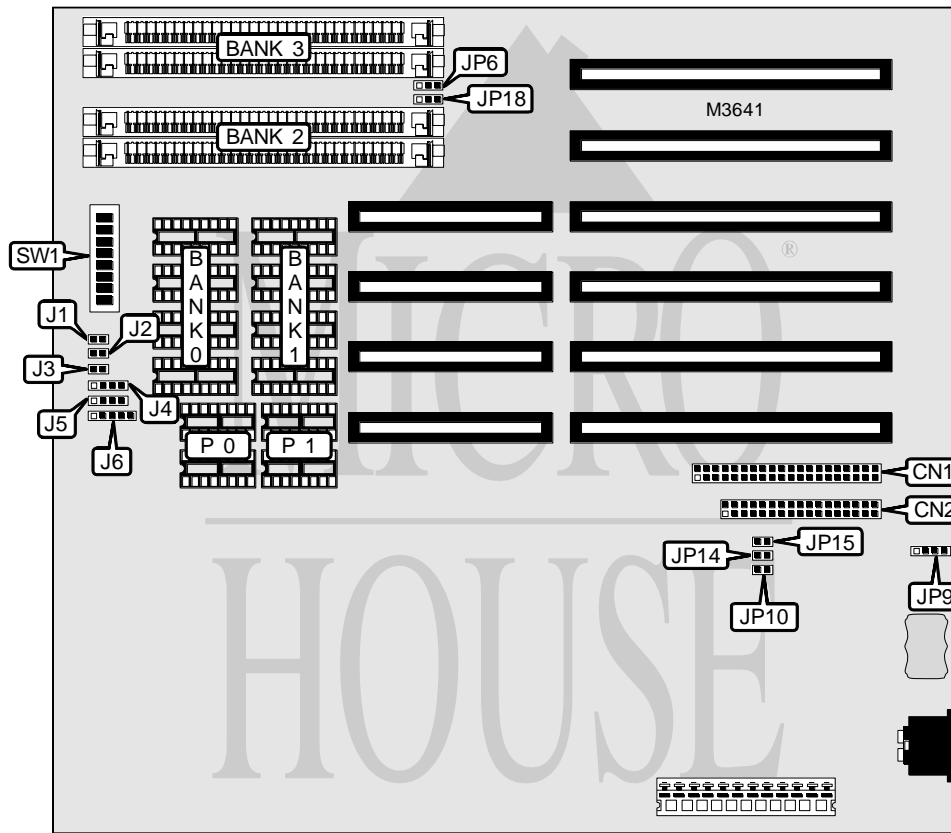


# UNIDENTIFIED SUNTAC - 286 P

<b>Processor</b>	80286
<b>Processor Speed</b>	12/16/20MHz
<b>Chip Set</b>	Suntac
<b>Video Chip Set</b>	None
<b>Maximum Onboard Memory</b>	5MB
<b>Maximum Video Memory</b>	None
<b>Cache</b>	None
<b>BIOS</b>	Unidentified
<b>Dimensions</b>	330mm x 218mm
<b>I/O Options</b>	Floppy drive interface, IDE interface
<b>NPU Options</b>	80287



CONNECTIONS			
Purpose	Location	Purpose	Location
IDE interface	CN1	IDE interface LED	J4
Floppy drive interface	CN2	Speaker	J5
Reset switch	J1	Power LED & keylock	J6
Turbo switch	J2	External battery	JP9
Turbo LED	J3		

Continued on next page . . .

# UNIDENTIFIED SUNTAC-286P

... continued from previous page

USER CONFIGURABLE SETTINGS		
Function	Label	Position
Floppy drive interface enabled	JP10	Closed
Floppy drive interface disabled	JP10	Open
Monitor type select color	SW1/1	On
Monitor type select monochrome	SW1/1	Off
Parity enabled	SW1/2	On
Parity disabled	SW1/2	Off

DRAM CONFIGURATION						
Size	Bank 0	P 0	Bank 1	P 1	Bank 2	Bank 3
512KB	(4) 44256	(2) 41256	None	None	None	None
1MB	(4) 44256	(2) 41256	(4) 44256	(2) 41256	None	None
2MB	(4) 44256	(2) 41256	(4) 44256	(2) 41256	(2) 256K x 9	(2) 256K x 9
5MB	(4) 44256	(2) 41256	(4) 44256	(2) 41256	(2) 1M x 9	(2) 1M x 9

DRAM SWITCH CONFIGURATION			
Size	SW1/3	SW1/4	SW1/5
512KB	On	On	On
1MB	On	On	Off
2MB	On	Off	Off
5MB	On	Off	On

DRAM SWITCH CONFIGURATION					
Base memory	Shadow memory	Extended memory	SW1/6	SW1/7	SW1/8
640KB	None	384KB	On	On	On
640KB	128KB	256KB	On	On	Off
512KB	None	512KB	On	Off	On
512KB	128KB	384KB	On	Off	Off
640KB	EMS	64KB	Off	On	On
640KB	EMS	None	Off	On	Off
512KB	EMS	64KB	Off	Off	On
512KB	EMS	None	Off	Off	Off

BIOS SELECTION		
Size	JP6	JP18
27256	Pins 1 & 2 closed	Pins 1 & 2 closed
27512	Pins 2 & 3 closed	Pins 2 & 3 closed

IDE INTERFACE CONFIGURATION		
Setting	JP14	JP15
Enabled	Open	Closed
Disabled	Closed	Open