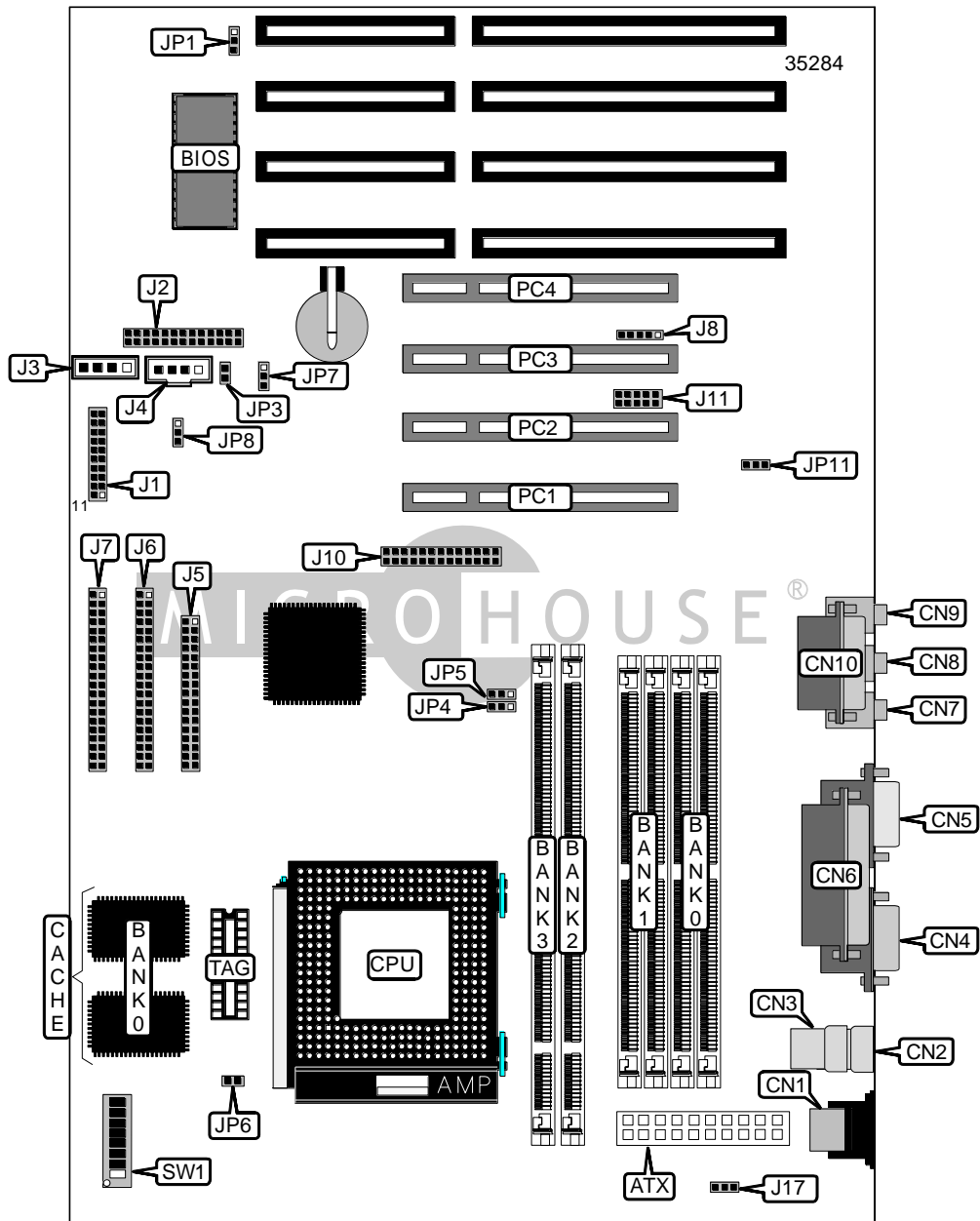


GEMLIGHT COMPUTER LTD.

GMB-P57SAX (VER. 1.20)

Device Type	Mainboard
Processor	CX 6X86/IBM 6X86/CX 6X86L/IBM 6X86L/CX 6X86MX/IBM 6X86MX/AM K5/AM K6/Pentium/Pentium MMX
Processor Speed	90/100/120/133/150/166/200/233/266MHz
Chip Set	SIS 5598
Maximum Onboard Memory	384MB (EDO & SDRAM supported)
Cache	512KB
BIOS	Award
I/O Options	32-bit PCI slots (4), CD-ROM interface (2), floppy drive interface, game port, IDE interfaces (2), parallel port, PS/2 mouse port, serial ports (2), VGA feature connector, VGA port, IR connector, USB connectors (2), wavetable connector, ATX power connector, microphone in, line in, line out



Continued on next page. . .

GEMLIGHT COMPUTER LTD.
GMB-P57SAX (VER. 1.20)

... continued from previous page

CONNECTIONS			
Purpose	Location	Purpose	Location
ATX power connector	ATX	Reset switch	J1/pins 9 & 10
PS/2 mouse port	CN1	Power LED & keylock	J1/pins 11-15
USB connector 1	CN2	Speaker	J1/pins 16-20
USB connector 2	CN3	Wavetable connector	J2
Serial port 1	CN4	Audio in - CD-ROM (Panasonic/Mitsumi)	J3
VGA port	CN5	Audio in - CD-ROM (Sony)	J4
Parallel port	CN6	Floppy drive interface	J5
External speaker	CN7	IDE interface 1	J6
Line in	CN8	IDE interface 2	J7
Microphone in	CN9	IR connector	J8
Game port	CN10	VGA feature connector	J10
IDE interface LED	J1/pins 1 & 2	Serial port 2	J11
Suspend LED	J1/pins 3 & 4	Chassis fan power	J17
Suspend switch	J1/pins 5 & 6	Internal modem ring-in connector	JP11
Power switch	J1/pins 7 & 8	32-bit PCI slots	PC1 - PC4

USER CONFIGURABLE SETTINGS		
Function	Label	Position
Flash BIOS voltage select 12v	JP1	Pins 1 & 2 closed
Flash BIOS voltage select 5v	JP1	Pins 2 & 3 closed
Onboard audio enabled	JP3	Closed
Onboard audio disabled	JP3	Open
í Factory configured - do not alter	JP6	Open
í CMOS memory normal operation	JP8	Pins 1 & 2 closed
CMOS memory clear	JP8	Pins 2 & 3 closed

VGA SETTINGS		
Function	JP4	JP5
Onboard VGA enabled	Pins 2 & 3 closed	Pins 1 & 2 closed
Onboard VGA disabled	Pins 1 & 2 closed	Pins 2 & 3 closed

Continued on next page. . .

GEMLIGHT COMPUTER LTD.
 GMB-P57SAX (VER. 1.20)

... continued from previous page

SIMM CONFIGURATION		
Size	Bank 0	Bank 1
8MB	(2) 1MB x 36	None
16MB	(2) 1MB x 36	(2) 1MB x 36
16MB	(2) 2MB x 36	None
24MB	(2) 2MB x 36	(2) 1MB x 36
32MB	(2) 2MB x 36	(2) 2MB x 36
32MB	(2) 4MB x 36	None
40MB	(2) 4MB x 36	(2) 1MB x 36
48MB	(2) 4MB x 36	(2) 2MB x 36
64MB	(2) 4MB x 36	(2) 4MB x 36
64MB	(2) 8MB x 36	None
72MB	(2) 8MB x 36	(2) 1MB x 36
80MB	(2) 8MB x 36	(2) 2MB x 36
96MB	(2) 8MB x 36	(2) 4MB x 36
128MB	(2) 8MB x 36	(2) 8MB x 36
128MB	(2) 16MB x 36	None
136MB	(2) 16MB x 36	(2) 1MB x 36
144MB	(2) 16MB x 36	(2) 2MB x 36
160MB	(2) 16MB x 36	(2) 4MB x 36
192MB	(2) 16MB x 36	(2) 8MB x 36
256MB	(2) 16MB x 36	(2) 16MB x 36

Note: Board accepts EDO memory.

DIMM CONFIGURATION		
Size	Bank 2	Bank 3
8MB	(1) 1MB x 64	None
16MB	(1) 1MB x 64	(1) 1MB x 64
16MB	(1) 2MB x 64	None
24MB	(1) 2MB x 64	(1) 1MB x 64
32MB	(1) 2MB x 64	(1) 2MB x 64
32MB	(1) 4MB x 64	None
40MB	(1) 4MB x 64	(1) 1MB x 64
48MB	(1) 4MB x 64	(1) 2MB x 64
64MB	(1) 4MB x 64	(1) 4MB x 64
64MB	(1) 8MB x 64	None
72MB	(1) 8MB x 64	(1) 1MB x 64
80MB	(1) 8MB x 64	(1) 2MB x 64
96MB	(1) 8MB x 64	(1) 4MB x 64
128MB	(1) 8MB x 64	(1) 8MB x 64
128MB	(1) 16MB x 64	None
136MB	(1) 16MB x 64	(1) 1MB x 64
144MB	(1) 16MB x 64	(1) 2MB x 64
160MB	(1) 16MB x 64	(1) 4MB x 64
192MB	(1) 16MB x 64	(1) 8MB x 64
256MB	(1) 16MB x 64	(1) 16MB x 64

Note: Board accepts EDO and SDRAM. Bank 2 cannot be used in conjunction with SIMM banks.

Continued on next page. . .

GEMLIGHT COMPUTER LTD.
GMB-P57SAX (VER. 1.20)

... continued from previous page

CPU SPEED SELECTION (CX 6X86)								
Speed	Clock speed	Multiplier	SW1/3	SW1/4	SW1/5	SW1/6	SW1/7	SW1/8
150MHz	60MHz	2x	On	Off	Off	On	Off	Off
166MHz	66MHz	2x	On	Off	Off	Off	Off	Off
200MHz	75MHz	2x	On	Off	Off	Off	On	Off

CPU SPEED SELECTION (IBM 6X86)								
Speed	Clock speed	Multiplier	SW1/3	SW1/4	SW1/5	SW1/6	SW1/7	SW1/8
150MHz	60MHz	2x	On	Off	Off	On	Off	Off
166MHz	66MHz	2x	On	Off	Off	Off	Off	Off
200MHz	75MHz	2x	On	Off	Off	Off	On	Off

CPU SPEED SELECTION (CX 6X86L)								
Speed	Clock speed	Multiplier	SW1/3	SW1/4	SW1/5	SW1/6	SW1/7	SW1/8
150MHz	60MHz	2x	On	Off	Off	On	Off	Off
166MHz	66MHz	2x	On	Off	Off	Off	Off	Off
200MHz	75MHz	2x	On	Off	Off	Off	On	Off

CPU SPEED SELECTION (IBM 6X86L)								
Speed	Clock speed	Multiplier	SW1/3	SW1/4	SW1/5	SW1/6	SW1/7	SW1/8
150MHz	60MHz	2x	On	Off	Off	On	Off	Off
166MHz	66MHz	2x	On	Off	Off	Off	Off	Off
200MHz	75MHz	2x	On	Off	Off	Off	On	Off

CPU SPEED SELECTION (CX 6X86MX)								
Speed	Clock speed	Multiplier	SW1/3	SW1/4	SW1/5	SW1/6	SW1/7	SW1/8
166MHz	60MHz	2.5x	On	On	Off	On	Off	Off
200MHz	75MHz	2x	On	Off	Off	Off	On	Off

CPU SPEED SELECTION (IBM 6X86MX)								
Speed	Clock speed	Multiplier	SW1/3	SW1/4	SW1/5	SW1/6	SW1/7	SW1/8
166MHz	60MHz	2.5x	On	On	Off	On	Off	Off
200MHz	75MHz	2x	On	Off	Off	Off	On	Off

CPU SPEED SELECTION (AM K5)								
Speed	Clock speed	Multiplier	SW1/3	SW1/4	SW1/5	SW1/6	SW1/7	SW1/8
120MHz	60MHz	2x	On	Off	Off	On	Off	Off
133MHz	66MHz	2x	On	Off	Off	Off	Off	Off
166MHz	66MHz	2.5x	On	On	Off	Off	Off	Off

CPU SPEED SELECTION (AM K6)								
Speed	Clock speed	Multiplier	SW1/3	SW1/4	SW1/5	SW1/6	SW1/7	SW1/8
166MHz	66MHz	2.5x	On	On	Off	Off	Off	Off
200MHz	66MHz	3x	Off	On	Off	Off	Off	Off
233MHz	66MHz	3.5x	Off	Off	Off	Off	Off	Off
266MHz	66MHz	4x	Off	Off	On	Off	Off	Off

Continued on next page...

GEMLIGHT COMPUTER LTD.
 GMB-P57SAX (VER. 1.20)

... continued from previous page

CPU SPEED SELECTION (PENTIUM)								
Speed	Clock speed	Multiplier	SW1/3	SW1/4	SW1/5	SW1/6	SW1/7	SW1/8
90MHz	60MHz	1.5x	Off	Off	Off	On	Off	Off
100MHz	66MHz	1.5x	Off	Off	Off	Off	Off	Off
120MHz	60MHz	2x	On	Off	Off	On	Off	Off
133MHz	66MHz	2x	On	Off	Off	Off	Off	Off
150MHz	60MHz	2.5x	On	On	Off	On	Off	Off
166MHz	66MHz	2.5x	On	On	Off	Off	Off	Off
200MHz	66MHz	3x	Off	On	Off	Off	Off	Off

CPU SPEED SELECTION (PENTIUM MMX)								
Speed	Clock speed	Multiplier	SW1/3	SW1/4	SW1/5	SW1/6	SW1/7	SW1/8
166MHz	66MHz	2.5x	On	On	Off	Off	Off	Off
200MHz	66MHz	3x	Off	On	Off	Off	Off	Off
233MHz	66MHz	3.5x	Off	Off	Off	Off	Off	Off

CPU VOLTAGE SELECTION		
Voltage	SW1/1	SW1/2
Auto detection	Off	Off
Note: Using the auto detection mode, CPU voltage is selected from within the BIOS. No alternative settings are provided.		